

Product datasheet for **TA324754S**

APRT Rabbit Polyclonal Antibody

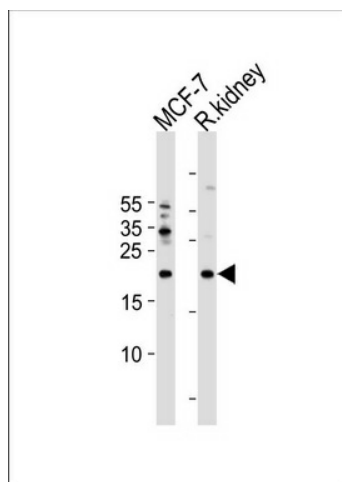
Product data:

Product Type:	Primary Antibodies
Applications:	IHC, WB
Recommended Dilution:	WB: 1:1000, IHC: 1:50~100
Reactivity:	Human, Rat
Host:	Rabbit
Isotype:	IgG
Clonality:	Polyclonal
Immunogen:	This APRT antibody is generated from rabbits immunized with a KLH conjugated synthetic peptide between 143-170 amino acids from the C-terminal region of human APRT.
Formulation:	Purified polyclonal antibody supplied in PBS with 0.09% (W/V) sodium azide.
Concentration:	lot specific
Purification:	This antibody is purified through a protein A column, followed by peptide affinity purification.
Conjugation:	Unconjugated
Storage:	Store at -20°C as received.
Stability:	Stable for 12 months from date of receipt.
Predicted Protein Size:	19608 Da
Gene Name:	adenine phosphoribosyltransferase
Database Link:	NP_000476 Entrez Gene 292072 Rat Entrez Gene 353 Human P07741
Synonyms:	AMP; APRTD
Protein Families:	Druggable Genome
Protein Pathways:	Metabolic pathways, Purine metabolism

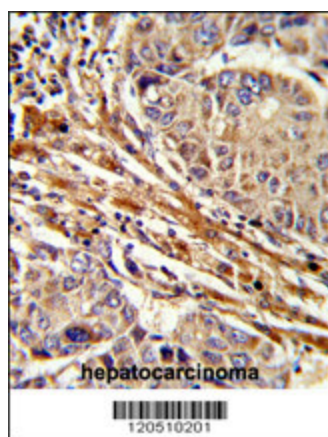


[View online »](#)

Product images:



APRT Antibody (C-term) (Cat. #TA324754J) western blot analysis in MCF-7 cell line and rat kidney tissue lysates (35ug/lane). This demonstrates the APRT antibody detected the APRT protein (arrow).



Formalin-fixed and paraffin-embedded human hepatocarcinoma reacted with APRT Antibody (C-term), which was peroxidase-conjugated to the secondary antibody, followed by DAB staining. This data demonstrates the use of this antibody for immunohistochemistry; clinical relevance has not been evaluated.