

Product datasheet for **TA324753S**

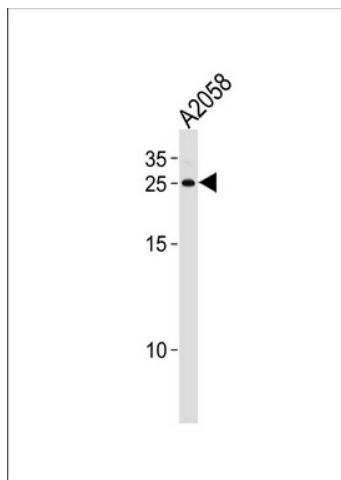
APRT Rabbit Polyclonal Antibody

Product data:

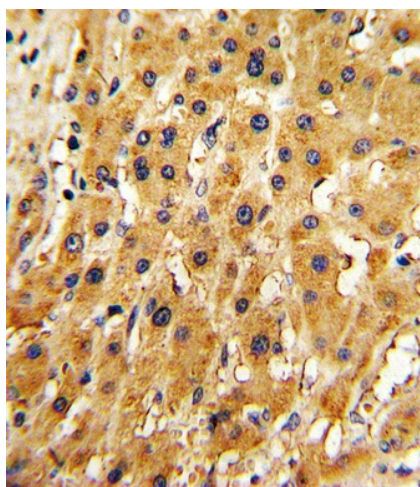
Product Type:	Primary Antibodies
Applications:	FC, IF, IHC, WB
Recommended Dilution:	WB: 1:1000, IF: 1:10~50, IHC: 1:10~50, FC: 1:10~50
Reactivity:	Human
Host:	Rabbit
Isotype:	IgG
Clonality:	Polyclonal
Immunogen:	This APRT antibody is generated from rabbits immunized with a KLH conjugated synthetic peptide between 12-40 amino acids from the N-terminal region of human APRT.
Formulation:	Purified polyclonal antibody supplied in PBS with 0.09% (W/V) sodium azide.
Concentration:	lot specific
Purification:	This antibody is purified through a protein A column, followed by peptide affinity purification.
Conjugation:	Unconjugated
Storage:	Store at -20°C as received.
Stability:	Stable for 12 months from date of receipt.
Predicted Protein Size:	19608 Da
Gene Name:	adenine phosphoribosyltransferase
Database Link:	NP_000476 Entrez Gene 353 Human P07741
Synonyms:	AMP; APRTD
Protein Families:	Druggable Genome
Protein Pathways:	Metabolic pathways, Purine metabolism



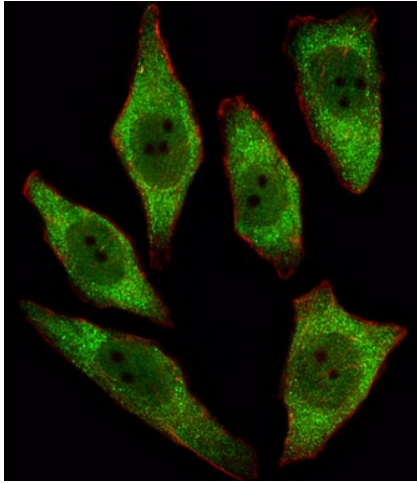
[View online »](#)

Product images:

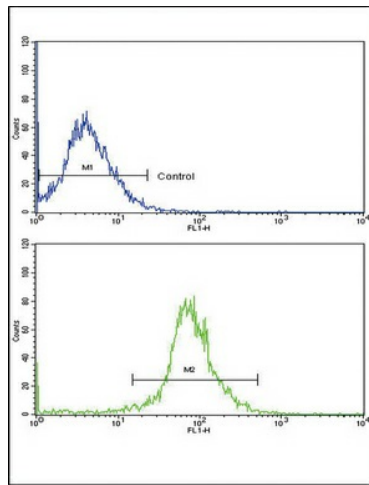
APRT Antibody (N-term) (Cat. #[TA324753]) western blot analysis in A2058 cell line lysates (35ug/lane). This demonstrates the APRT antibody detected the APRT protein (arrow).



Formalin-fixed and paraffin-embedded human hepatocarcinoma with APRT Antibody (N-term), which was peroxidase-conjugated to the secondary antibody, followed by DAB staining. This data demonstrates the use of this antibody for immunohistochemistry; clinical relevance has not been evaluated.



IF image of A549 cell stained with APRT Antibody (N-term) (Cat#[TA324753]/SA091009AF). A549 cells were incubated with APRT primary antibody (1:25, 1 h at 37°C). For secondary antibody, Alexa Fluor® 488 conjugated donkey anti-rabbit antibody (green) was used (1:400). Cytoplasmic actin was counterstained with Alexa Fluor® 555 (red) conjugated Phalloidin (7 units/ml). APRT immunoreactivity is localized to Cytoplasm and Nucleus significantly.



Flow cytometric analysis of HepG2 cells using APRT Antibody (N-term) (bottom histogram) compared to a negative control cell (top histogram). FITC-conjugated goat-anti-rabbit secondary antibodies were used for the analysis.