

## Product datasheet for **TA324752**

### STATIP1 (ELP2) Rabbit Polyclonal Antibody

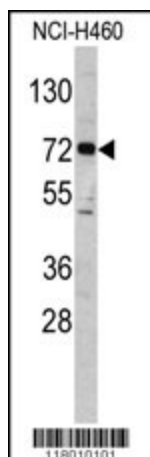
#### Product data:

Product Type:	Primary Antibodies
Applications:	FC, IF, WB
Recommended Dilution:	IF: 1:100, WB: 1:1000, FC: 1:10~50
Reactivity:	Human
Host:	Rabbit
Isotype:	IgG
Clonality:	Polyclonal
Immunogen:	This ELP2 antibody is generated from rabbits immunized with a KLH conjugated synthetic peptide between 737-765 amino acids from the C-terminal region of human ELP2.
Formulation:	Purified polyclonal antibody supplied in PBS with 0.09% (W/V) sodium azide.
Concentration:	lot specific
Purification:	This antibody is prepared by Saturated Ammonium Sulfate (SAS) precipitation followed by dialysis against PBS.
Conjugation:	Unconjugated
Storage:	Store at -20°C as received.
Stability:	Stable for 12 months from date of receipt.
Predicted Protein Size:	92500 Da
Gene Name:	elongator acetyltransferase complex subunit 2
Database Link:	<a href="#">NP_060725</a> <a href="#">Entrez Gene 55250 Human</a> <a href="#">Q6IA86</a>
Synonyms:	SHINC-2; STATIP1; StIP

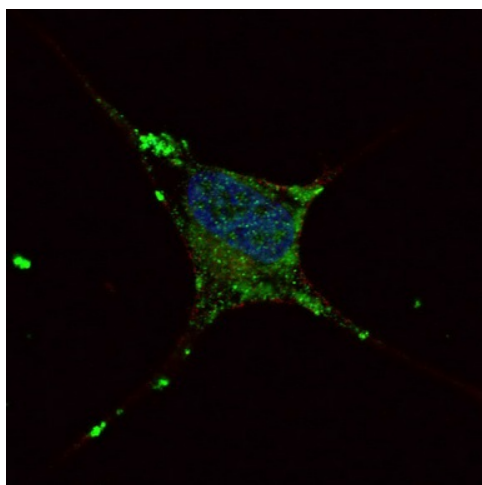


[View online »](#)

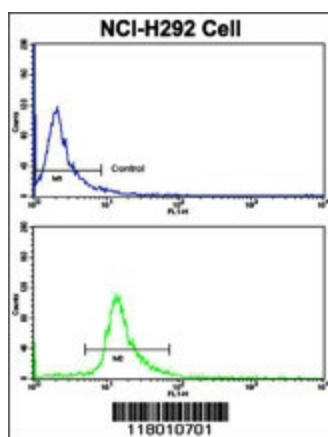
## Product images:



Western blot analysis of ELP2 antibody (C-term) (Cat. #TA324752) in NCI-H460 cell line lysates (35ug/lane). ELP2 (arrow) was detected using the purified Pab.



IF image of SY5Y cells stained with ELP2 (C-term) antibody. SY5Y cells were incubated with TA324752 ELP2 (C-term) primary antibody (1:100, 2 h at RT). For secondary antibody, Alexa Fluor® 488 conjugated donkey anti-rabbit antibody (green) was used (1:1000, 1h). Nuclei were counterstained with Hoechst 33342 (blue). Note the highly specific localization of the ELP2 immunosignal mainly to the cytoplasm, supported by Human Protein Atlas Data (<http://www.proteinatlas.org/ENSG00000134759>).



Flow cytometric analysis of NCI-H292 cells using ELP2 Antibody (C-term) (bottom histogram) compared to a negative control cell (top histogram). FITC-conjugated goat-anti-rabbit secondary antibodies were used for the analysis.