

Product datasheet for **TA324751S**

Non Neuronal Enolase (ENO1) Rabbit Polyclonal Antibody

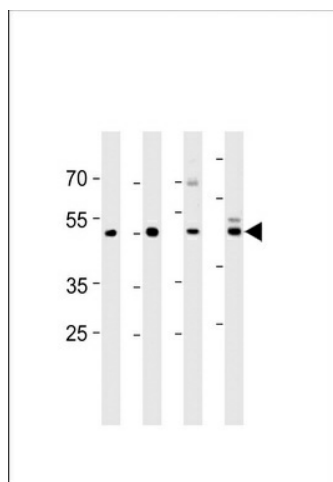
Product data:

Product Type:	Primary Antibodies
Applications:	FC, IF, WB
Recommended Dilution:	WB: 1:1000, FC: 1:10~50, IF: 1:10~50
Reactivity:	Human, Mouse (Predicted: Bovine, Monkey)
Host:	Rabbit
Isotype:	IgG
Clonality:	Polyclonal
Immunogen:	This ENOA antibody is generated from rabbits immunized with a KLH conjugated synthetic peptide between 33-60 amino acids from the N-terminal region of human ENOA.
Formulation:	Purified polyclonal antibody supplied in PBS with 0.09% (W/V) sodium azide.
Concentration:	lot specific
Purification:	This antibody is prepared by Saturated Ammonium Sulfate (SAS) precipitation followed by dialysis against PBS.
Conjugation:	Unconjugated
Storage:	Store at -20°C as received.
Stability:	Stable for 12 months from date of receipt.
Predicted Protein Size:	47169 Da
Gene Name:	enolase 1
Database Link:	NP_001419 Entrez Gene 13806 Mouse Entrez Gene 709378 Monkey Entrez Gene 2023 Human P06733
Synonyms:	ENO1L1; MPB1; NNE; PPH
Protein Families:	Druggable Genome, Transcription Factors
Protein Pathways:	Glycolysis / Gluconeogenesis, Metabolic pathways, RNA degradation

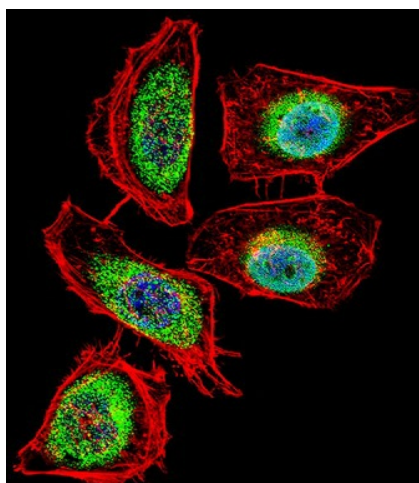


[View online »](#)

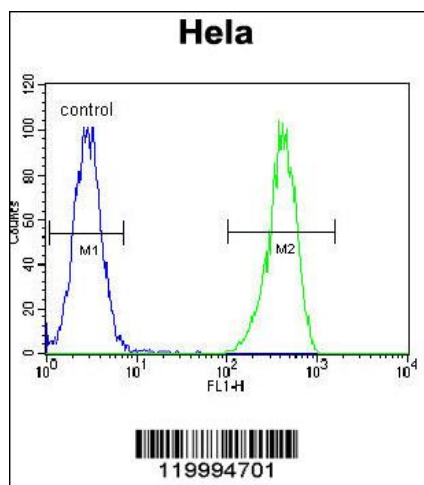
Product images:



ENO1 Antibody (N-term) (Cat. #TA324751S) western blot analysis in U251, mouse C2C12, mouse NIH/3T3 cell line and mouse brain tissue lysates (35ug/lane). This demonstrates the ENO1 antibody detected the ENO1 protein (arrow).



IF image of HeLa cell stained with ENO1 Antibody (N-term) (Cat#TA324751S). HeLa cells were incubated with ENO1 primary antibody (1:25, 1 h at 37°C). For secondary antibody, Alexa Fluor® 488 conjugated donkey anti-rabbit antibody (green) was used (1:400). Cytoplasmic actin was counterstained with Alexa Fluor® 555 (red) conjugated Phalloidin (7 units/ml). Nuclei were counterstained with DAPI (blue). ENO1 immunoreactivity is localized to Cytoplasm and Nucleus significantly.



ENOA Antibody (N-term) (Cat. #TA324751) flow cytometric analysis of Hela cells (right histogram) compared to a negative control cell (left histogram). FITC-conjugated goat-anti-rabbit secondary antibodies were used for the analysis.