

Product datasheet for **TA324748S**

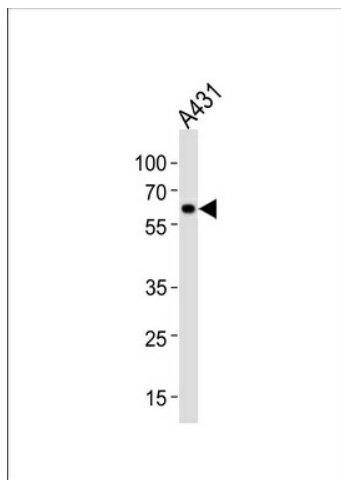
Hsp60 (HSPD1) Rabbit Polyclonal Antibody

Product data:

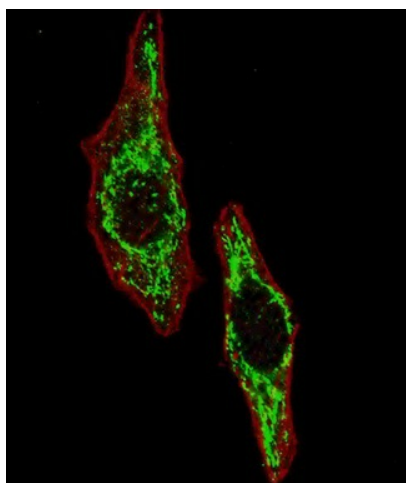
Product Type:	Primary Antibodies
Applications:	IF, WB
Recommended Dilution:	WB 1:1000, IF: 1:10 - 50
Reactivity:	Human (Predicted: Mouse, Rat, Bovine, Chicken, Hamster)
Host:	Rabbit
Isotype:	IgG
Clonality:	Polyclonal
Immunogen:	This HSPD1 antibody is generated from rabbits immunized with a KLH conjugated synthetic peptide between 187-215 amino acids from the Central region of human HSPD1.
Formulation:	Purified polyclonal antibody supplied in PBS with 0.09% (W/V) sodium azide.
Concentration:	lot specific
Purification:	This antibody is prepared by Saturated Ammonium Sulfate (SAS) precipitation followed by dialysis against PBS.
Conjugation:	Unconjugated
Storage:	Store at -20°C as received.
Stability:	Stable for 12 months from date of receipt.
Predicted Protein Size:	61055 Da
Gene Name:	heat shock protein family D (Hsp60) member 1
Database Link:	NP_002147 Entrez Gene 15510 Mouse Entrez Gene 63868 Rat Entrez Gene 3329 Human P10809
Synonyms:	CPN60; GROEL; HLD4; HSP-60; HSP60; HSP65; HuCHA60; SPG13
Protein Families:	Druggable Genome, Stem cell - Pluripotency
Protein Pathways:	RNA degradation, Type I diabetes mellitus



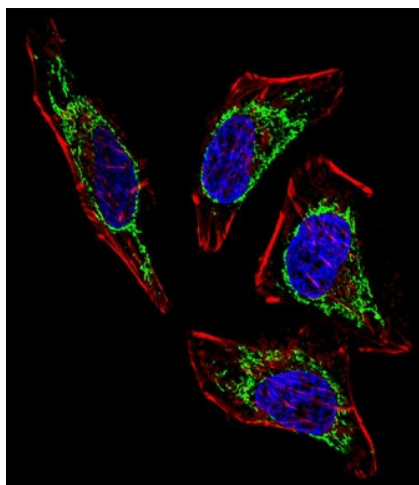
[View online »](#)

Product images:

HSPD1 Antibody (Center) (Cat. #[TA324748]) western blot analysis in A431 cell line lysates (35ug/lane). This demonstrates the HSPD1 antibody detected the HSPD1 protein (arrow).



IF image of U251 cells stained with HSPD1 (Center) antibody. U251 cells were incubated with AP2859C HSPD1 (Center) primary antibody (1:100, 2 h at RT). For secondary antibody, Alexa Fluor® 488 conjugated donkey anti-rabbit antibody (green) was used (1:1000, 1h). Cytoplasmic actin was counterstained with Alexa Fluor® 555 (red) conjugated Phalloidin. Pictures were taken on a Biorevo microscope (BZ-900, Keyence). Note the highly specific localization of the HSPD1 mainly to the mitochondria.



IF image of HeLa cell stained with HSPD1 Antibody (Center) (Cat#[TA324748]). HeLa cells were incubated with HSPD1 primary antibody (1:25, 1 h at 37°C). For secondary antibody, Alexa Fluor® 488 conjugated donkey anti-rabbit antibody (1:400). Cytoplasmic actin was counterstained with Alexa Fluor® 555 (red) conjugated Phalloidin (7 units/ml). Nuclei were counterstained with DAPI (blue). HSPD1 immunoreactivity is localized to Mitochondria significantly.