

## Product datasheet for **TA324747**

### Hsp60 (HSPD1) Rabbit Polyclonal Antibody

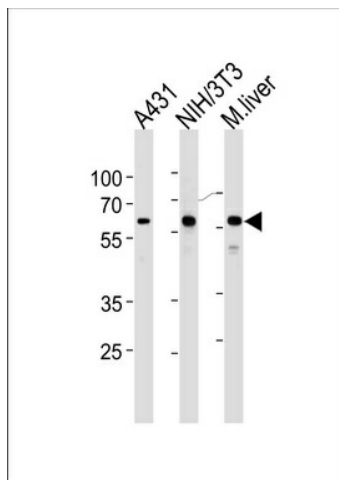
#### Product data:

Product Type:	Primary Antibodies
Applications:	FC, IHC, WB
Recommended Dilution:	WB: 1:1000, IHC: 1:50~100, FC: 1:10~50
Reactivity:	Human, Mouse (Predicted: Rat, Bovine, Chicken, Hamster)
Host:	Rabbit
Isotype:	IgG
Clonality:	Polyclonal
Immunogen:	This HSPD1 antibody is generated from rabbits immunized with a KLH conjugated synthetic peptide between 396-423 amino acids from the C-terminal region of human HSPD1.
Formulation:	Purified polyclonal antibody supplied in PBS with 0.09% (W/V) sodium azide.
Concentration:	lot specific
Purification:	This antibody is prepared by Saturated Ammonium Sulfate (SAS) precipitation followed by dialysis against PBS.
Conjugation:	Unconjugated
Storage:	Store at -20°C as received.
Stability:	Stable for 12 months from date of receipt.
Predicted Protein Size:	61055 Da
Gene Name:	heat shock protein family D (Hsp60) member 1
Database Link:	<a href="#">NP_002147</a> <a href="#">Entrez Gene 15510 Mouse</a> <a href="#">Entrez Gene 63868 Rat</a> <a href="#">Entrez Gene 3329 Human</a> <a href="#">P10809</a>
Synonyms:	CPN60; GROEL; HLD4; HSP-60; HSP60; HSP65; HuCHA60; SPG13
Protein Families:	Druggable Genome, Stem cell - Pluripotency
Protein Pathways:	RNA degradation, Type I diabetes mellitus

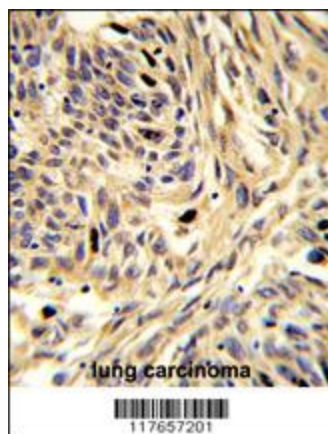


[View online »](#)

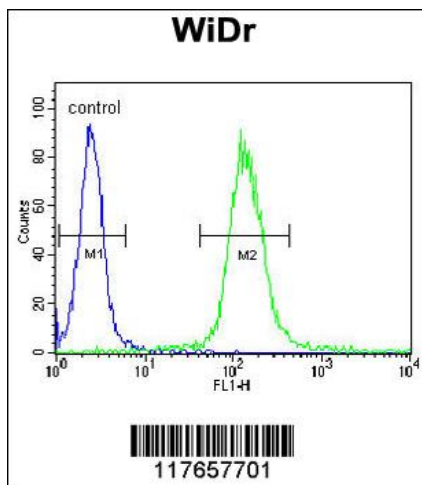
## Product images:



HSPD1 Antibody (C-term) (Cat. #TA324747) western blot analysis in A431, mouse NIH/3T3 cell line and mouse liver tissue lysates (35ug/lane). This demonstrates the HSPD1 antibody detected the HSPD1 protein (arrow).



Formalin-fixed and paraffin-embedded human lung carcinoma reacted with HSPD1 Antibody (C-term), which was peroxidase-conjugated to the secondary antibody, followed by DAB staining. This data demonstrates the use of this antibody for immunohistochemistry; clinical relevance has not been evaluated.



HSPD1 Antibody (C-term) (Cat. #TA324747) flow cytometric analysis of WiDr cells (right histogram) compared to a negative control cell (left histogram). FITC-conjugated goat-anti-rabbit secondary antibodies were used for the analysis.