

Product datasheet for **TA324746S**

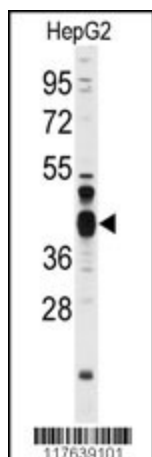
FEN1 Rabbit Polyclonal Antibody

Product data:

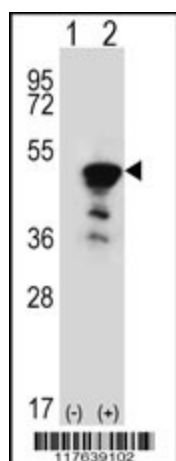
Product Type:	Primary Antibodies
Applications:	IF, WB
Recommended Dilution:	IF: 1:100, WB: 1:1000
Reactivity:	Human (Predicted: Bovine)
Host:	Rabbit
Isotype:	IgG
Clonality:	Polyclonal
Immunogen:	This FEN1 antibody is generated from rabbits immunized with a KLH conjugated synthetic peptide between 243-272 amino acids from the Central region of human FEN1.
Formulation:	Purified polyclonal antibody supplied in PBS with 0.09% (W/V) sodium azide.
Concentration:	lot specific
Purification:	This antibody is prepared by Saturated Ammonium Sulfate (SAS) precipitation followed by dialysis against PBS.
Conjugation:	Unconjugated
Storage:	Store at -20°C as received.
Stability:	Stable for 12 months from date of receipt.
Predicted Protein Size:	42593 Da
Gene Name:	flap structure-specific endonuclease 1
Database Link:	NP_004102 Entrez Gene 2237 Human P39748
Synonyms:	FEN-1; MF1; RAD2
Protein Families:	Druggable Genome, Stem cell - Pluripotency
Protein Pathways:	Base excision repair, DNA replication, Non-homologous end-joining



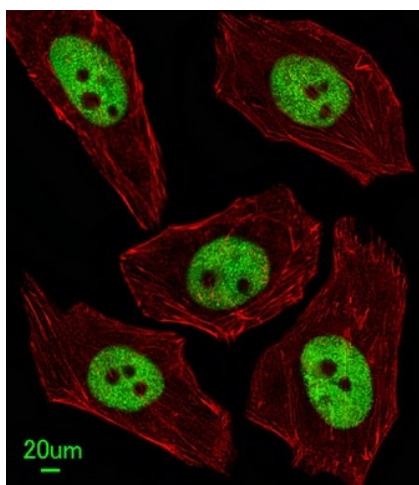
[View online »](#)

Product images:


Western blot analysis of anti-FEN1 Antibody (Center) (Cat.#[TA324746]) in HepG2 cell line lysates (35ug/lane). FEN1 (arrow) was detected using the purified Pab.



Western blot analysis of FEN1 (arrow) using rabbit polyclonal FEN1 Antibody (Center) (Cat.# [TA324746]). 293 cell lysates (2 ug/lane) either nontransfected (Lane 1) or transiently transfected (Lane 2) with the FEN1 gene.



Immunofluorescent analysis of U251 cells, using FEN1 Antibody (Center) (Cat. #[TA324746]). [TA324746] was diluted at 1:100 dilution. Alexa Fluor 488-conjugated goat anti-rabbit IgG at 1:400 dilution was used as the secondary antibody (green). DAPI was used to stain the cell nuclear (blue).