

## Product datasheet for **TA324744**

### EBP1 (PA2G4) Rabbit Polyclonal Antibody

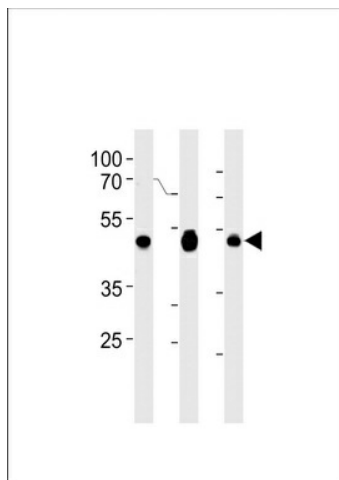
#### Product data:

Product Type:	Primary Antibodies
Applications:	FC, IHC, WB
Recommended Dilution:	WB: 1:1000, IHC: 1:50~100, FC: 1:10~50
Reactivity:	Human (Predicted: Mouse)
Host:	Rabbit
Isotype:	IgG
Clonality:	Polyclonal
Immunogen:	This EBP1 antibody is generated from rabbits immunized with a KLH conjugated synthetic peptide between 228-255 amino acids from the Central region of human EBP1.
Formulation:	Purified polyclonal antibody supplied in PBS with 0.09% (W/V) sodium azide.
Concentration:	lot specific
Purification:	This antibody is purified through a protein A column, followed by peptide affinity purification.
Conjugation:	Unconjugated
Storage:	Store at -20°C as received.
Stability:	Stable for 12 months from date of receipt.
Predicted Protein Size:	43787 Da
Gene Name:	proliferation-associated 2G4
Database Link:	<a href="#">NP_006182</a> <a href="#">Entrez Gene 18813 Mouse</a> <a href="#">Entrez Gene 5036 Human</a> <a href="#">Q9UQ80</a>
Synonyms:	EBP1; HG4-1; p38-2G4
Protein Families:	Druggable Genome, Protease, Stem cell - Pluripotency

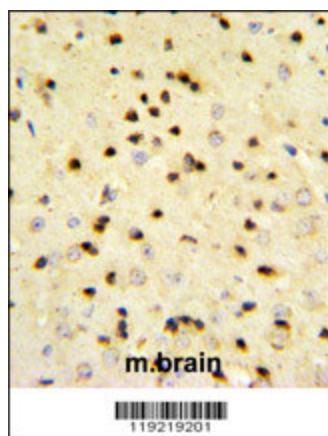


[View online »](#)

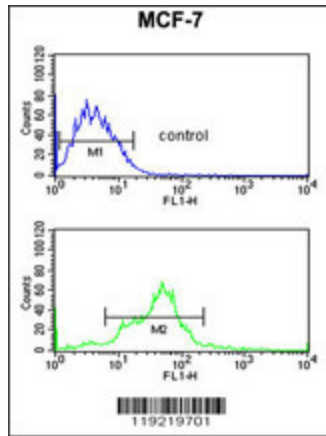
## Product images:



EBP1 Antibody (Center) (Cat. #TA324744) western blot analysis in A2058, Jurkat, MCF-7 cell line lysates (35ug/lane). This demonstrates the EBP1 antibody detected the EBP1 protein (arrow).



EBP1 Antibody (Center) (Cat. #TA324744) IHC analysis in formalin fixed and paraffin embedded mouse brain tissue followed by peroxidase conjugation of the secondary antibody and DAB staining. This data demonstrates the use of the EBP1 Antibody (Center) for immunohistochemistry. Clinical relevance has not been evaluated.



EBP1 Antibody (Center) (Cat. #TA324744) flow cytometric analysis of MCF-7 cells (bottom histogram) compared to a negative control cell (top histogram). FITC-conjugated goat-anti-rabbit secondary antibodies were used for the analysis.