

## Product datasheet for **TA324743**

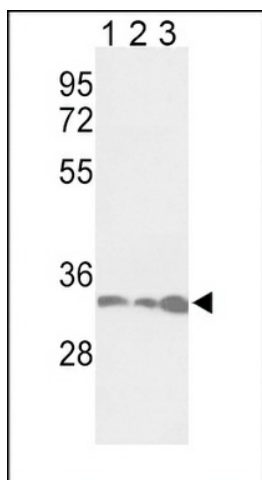
### PCNA Rabbit Polyclonal Antibody

#### Product data:

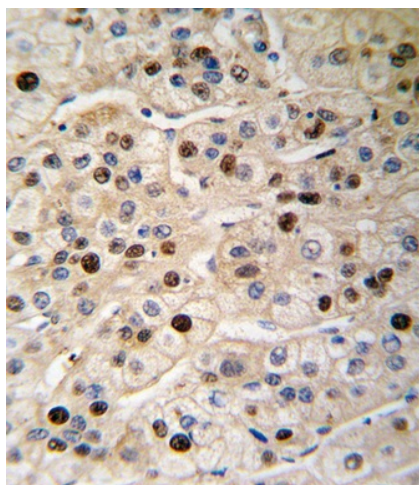
Product Type:	Primary Antibodies
Applications:	FC, IF, IHC, WB
Recommended Dilution:	WB: 1:1000, IHC: 1:10~50, IF: 1:10~50, FC: 1:10~50
Reactivity:	Human (Predicted: Mouse, Rat, Bovine, Chicken, Hamster, Monkey)
Host:	Rabbit
Isotype:	IgG
Clonality:	Polyclonal
Immunogen:	This PCNA antibody is generated from rabbits immunized with a KLH conjugated synthetic peptide between 89-117 amino acids from the Central region of human PCNA.
Formulation:	Purified polyclonal antibody supplied in PBS with 0.09% (W/V) sodium azide.
Concentration:	lot specific
Purification:	This antibody is prepared by Saturated Ammonium Sulfate (SAS) precipitation followed by dialysis against PBS.
Conjugation:	Unconjugated
Storage:	Store at -20°C as received.
Stability:	Stable for 12 months from date of receipt.
Predicted Protein Size:	28769 Da
Gene Name:	proliferating cell nuclear antigen
Database Link:	<a href="#">NP_002583</a> <a href="#">Entrez Gene 18538 Mouse</a> <a href="#">Entrez Gene 25737 Rat</a> <a href="#">Entrez Gene 718006 Monkey</a> <a href="#">Entrez Gene 5111 Human</a> <a href="#">P12004</a>
Synonyms:	ATLD2
Protein Families:	Druggable Genome, Stem cell - Pluripotency
Protein Pathways:	Base excision repair, Cell cycle, DNA replication, Mismatch repair, Nucleotide excision repair



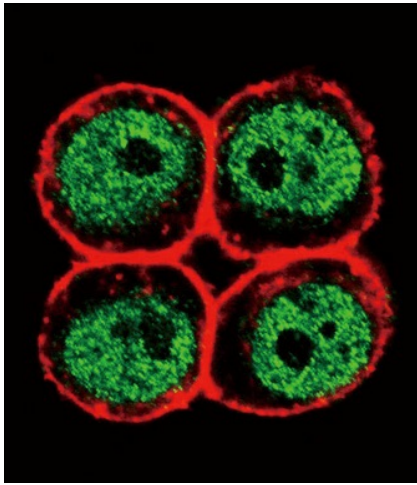
[View online »](#)

**Product images:**

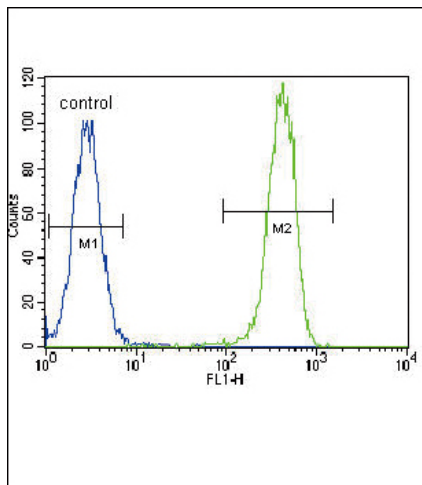
Western blot analysis of PCNA Antibody (Center) (Cat.#TA324743) in Jurkat (lane 1), HeLa (lane 2), 293 (lane 3) cell line lysates (35ug/lane). PCNA (arrow) was detected using the purified Pab.



Formalin-fixed and paraffin-embedded human hepatocarcinoma tissue reacted with PCNA antibody (Center) (Cat. #TA324743), which was peroxidase-conjugated to the secondary antibody, followed by DAB staining. This data demonstrates the use of this antibody for immunohistochemistry; clinical relevance has not been evaluated.



Confocal immunofluorescent analysis of PCNA Antibody (Center) (Cat#TA324743) with HeLa cell followed by Alexa Fluor 488-conjugated goat anti-rabbit IgG (green). Actin filaments have been labeled with Alexa Fluor 555 phalloidin (red).



PCNA Antibody (Center) (Cat. #TA324743) flow cytometric analysis of HeLa cells (right histogram) compared to a negative control cell (left histogram). FITC-conjugated goat-anti-rabbit secondary antibodies were used for the analysis.