

Product datasheet for **TA324742S**

Nucleophosmin (NPM1) Rabbit Polyclonal Antibody

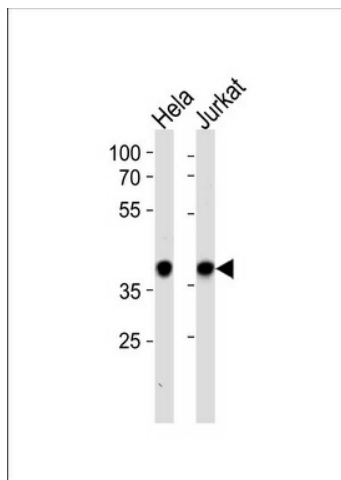
Product data:

Product Type:	Primary Antibodies
Applications:	FC, IF, IHC, WB
Recommended Dilution:	IF: 1:10~50, WB: 1:1000, FC: 1:10~50, IHC: 1:10~50
Reactivity:	Human
Host:	Rabbit
Isotype:	IgG
Clonality:	Polyclonal
Immunogen:	This NPM1 antibody is generated from rabbits immunized with a KLH conjugated synthetic peptide between 198-226 amino acids from the C-terminal region of human NPM1.
Formulation:	Purified polyclonal antibody supplied in PBS with 0.09% (W/V) sodium azide.
Concentration:	lot specific
Purification:	This antibody is prepared by Saturated Ammonium Sulfate (SAS) precipitation followed by dialysis against PBS.
Conjugation:	Unconjugated
Storage:	Store at -20°C as received.
Stability:	Stable for 12 months from date of receipt.
Predicted Protein Size:	32575 Da
Gene Name:	nucleophosmin (nucleolar phosphoprotein B23, numatrin)
Database Link:	NP_001032827 Entrez Gene 4869 Human P06748
Synonyms:	B23; NPM
Protein Families:	Druggable Genome, Stem cell - Pluripotency, Transcription Factors

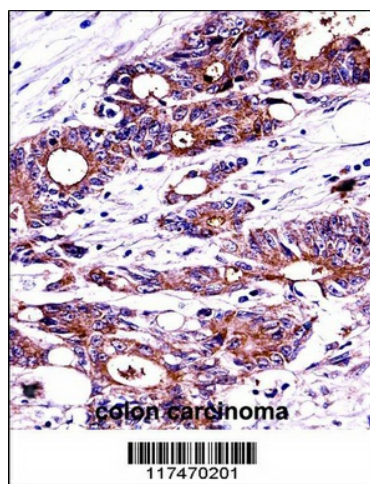


[View online »](#)

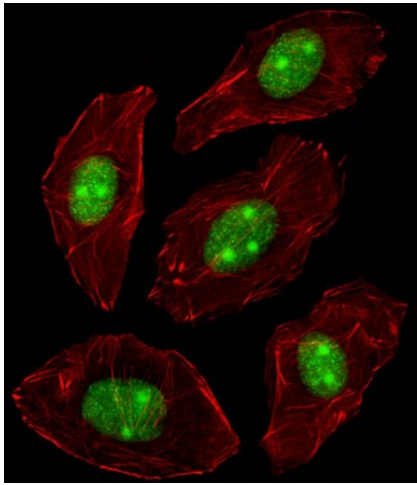
Product images:



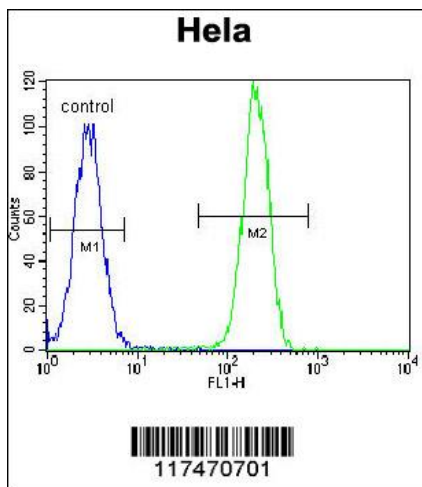
NPM1 Antibody (C-term) (Cat. #[TA324742]) western blot analysis in HeLa, Jurkat cell line lysates (35ug/lane). This demonstrates the NPM1 antibody detected the NPM1 protein (arrow).



NPM1 Antibody (C-term) ([TA324742]) immunohistochemistry analysis in formalin fixed and paraffin embedded human colon carcinoma followed by peroxidase conjugation of the secondary antibody and DAB staining. This data demonstrates the use of NPM1 Antibody (C-term) for immunohistochemistry. Clinical relevance has not been evaluated.



IF image of A549 cell stained with NPM1 Antibody (C-term) (Cat#[TA324742]/SH090717BE). A549 cells were incubated with NPM1 primary antibody (1:25, 1 h at 37°C). For secondary antibody, Alexa Fluor® 488 conjugated donkey anti-rabbit antibody (green) was used (1:400). Cytoplasmic actin was counterstained with Alexa Fluor® 555 (red) conjugated Phalloidin (7 units/ml). NPM1 immunoreactivity is localized to Nucleus and Nucleolus significantly.



NPM1 Antibody (C-term) (Cat. #[TA324742]) flow cytometric analysis of HeLa cells (right histogram) compared to a negative control cell (left histogram). FITC-conjugated goat-anti-rabbit secondary antibodies were used for the analysis.