

Product datasheet for **TA324741S**

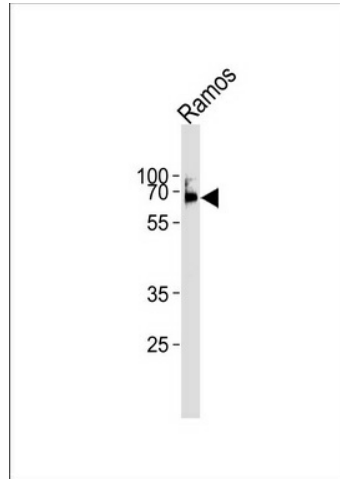
LCK Rabbit Polyclonal Antibody

Product data:

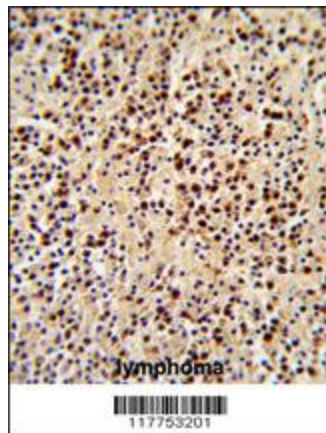
Product Type:	Primary Antibodies
Applications:	FC, IHC, WB
Recommended Dilution:	WB: 1:1000, IHC: 1:50~100, FC: 1:10~50
Reactivity:	Human
Host:	Rabbit
Isotype:	IgG
Clonality:	Polyclonal
Immunogen:	This LCK antibody is generated from rabbits immunized with a KLH conjugated synthetic peptide between 480-509 amino acids from the C-terminal region of human LCK.
Formulation:	Purified polyclonal antibody supplied in PBS with 0.09% (W/V) sodium azide.
Concentration:	lot specific
Purification:	This antibody is prepared by Saturated Ammonium Sulfate (SAS) precipitation followed by dialysis against PBS.
Conjugation:	Unconjugated
Storage:	Store at -20°C as received.
Stability:	Stable for 12 months from date of receipt.
Predicted Protein Size:	58001 Da
Gene Name:	LCK proto-oncogene, Src family tyrosine kinase
Database Link:	NP_001036236 Entrez Gene 3932 Human P06239
Synonyms:	IMD22; LSK; p56lck; pp58lck; YT16
Protein Families:	Druggable Genome, Protein Kinase, Stem cell - Pluripotency
Protein Pathways:	Natural killer cell mediated cytotoxicity, Primary immunodeficiency, T cell receptor signaling pathway



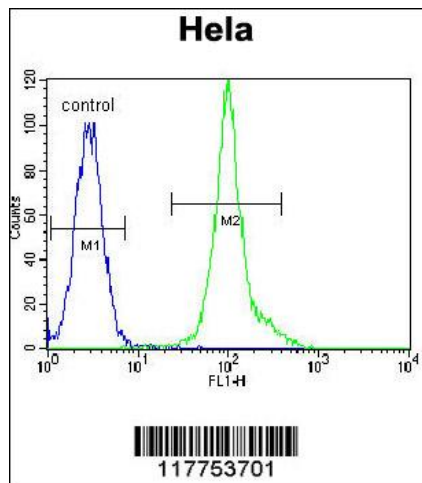
[View online »](#)

Product images:


LCK Antibody (C-term) (Cat. #TA324741S) western blot analysis in Ramos cell line lysates (35ug/lane). This demonstrates the LCK antibody detected the LCK protein (arrow).



Formalin-fixed and paraffin-embedded human lymphoma reacted with LCK Antibody (C-term), which was peroxidase-conjugated to the secondary antibody, followed by DAB staining. This data demonstrates the use of this antibody for immunohistochemistry; clinical relevance has not been evaluated.



LCK Antibody (C-term) (Cat. #TA324741S) flow cytometric analysis of HeLa cells (right histogram) compared to a negative control cell (left histogram). FITC-conjugated goat-anti-rabbit secondary antibodies were used for the analysis.