

## Product datasheet for **TA324738**

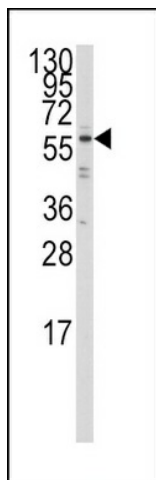
### IRF5 Rabbit Polyclonal Antibody

#### Product data:

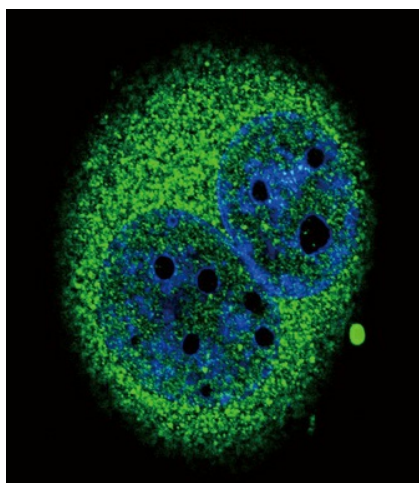
|                         |   |
|-------------------------|---|
| Product Type:           | Primary Antibodies  |
| Applications:           | FC, IF, WB  |
| Recommended Dilution:   | WB: 1:1000, IF: 1:10~50, FC: 1:10~50  |
| Reactivity:             | Human (Predicted: Bovine)   |
| Host:                   | Rabbit  |
| Isotype:                | IgG   |
| Clonality:              | Polyclonal  |
| Immunogen:              | This IRF5 antibody is generated from rabbits immunized with a KLH conjugated synthetic peptide between 81-108 amino acids from the N-terminal region of human IRF5. |
| Formulation:            | Purified polyclonal antibody supplied in PBS with 0.09% (W/V) sodium azide.   |
| Concentration:          | lot specific  |
| Purification:           | This antibody is prepared by Saturated Ammonium Sulfate (SAS) precipitation followed by dialysis against PBS.   |
| Conjugation:            | Unconjugated  |
| Storage:                | Store at -20°C as received.   |
| Stability:              | Stable for 12 months from date of receipt.  |
| Predicted Protein Size: | 56044 Da  |
| Gene Name:              | interferon regulatory factor 5  |
| Database Link:          | <a href="#">NP_001092097</a><br><a href="#">Entrez Gene 3663 Human</a><br><a href="#">Q13568</a>  |
| Synonyms:               | SLEB10  |
| Protein Families:       | Transcription Factors   |
| Protein Pathways:       | Toll-like receptor signaling pathway  |



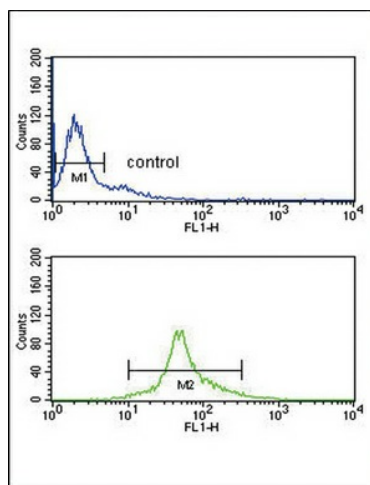
[View online »](#)

**Product images:**

Western blot analysis of anti-IRF5 Antibody (N-term) (Cat.#TA324738) in Ramos cell line lysates (35ug/lane). IRF5 (arrow) was detected using the purified Pab.



Confocal immunofluorescent analysis of IRF5 Antibody (N-term) (Cat. #TA324738) with A549 cell followed by Alexa Fluor 489-conjugated goat anti-rabbit IgG (green). DAPI was used to stain the cell nuclear (blue).



IRF5 Antibody (N-term) (Cat. #TA324738) flow cytometry analysis of Ramos cells (bottom histogram) compared to a negative control cell (top histogram). FITC-conjugated goat-anti-rabbit secondary antibodies were used for the analysis.