

Product datasheet for **TA324737**

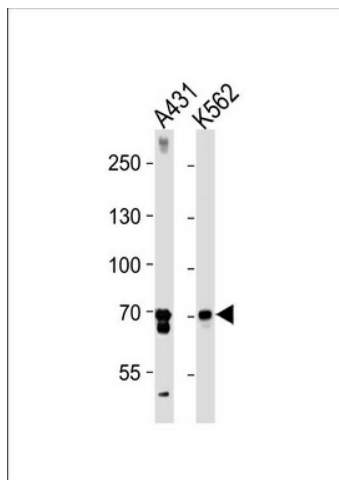
PTGS1 Rabbit Polyclonal Antibody

Product data:

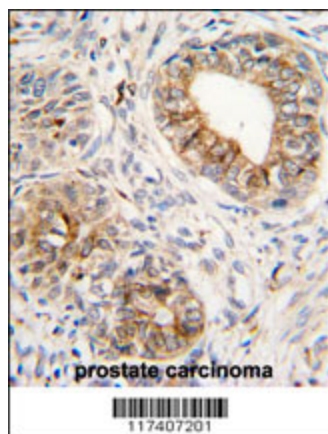
Product Type:	Primary Antibodies
Applications:	IF, IHC, WB
Recommended Dilution:	WB: 1:1000, IF: 1:10~50, IHC: 1:10~50
Reactivity:	Human
Host:	Rabbit
Isotype:	IgG
Clonality:	Polyclonal
Immunogen:	This PTGS1 antibody is generated from rabbits immunized with a KLH conjugated synthetic peptide between 571-599 amino acids from the C-terminal region of human PTGS1.
Formulation:	Purified polyclonal antibody supplied in PBS with 0.09% (W/V) sodium azide.
Concentration:	lot specific
Purification:	This antibody is prepared by Saturated Ammonium Sulfate (SAS) precipitation followed by dialysis against PBS.
Conjugation:	Unconjugated
Storage:	Store at -20°C as received.
Stability:	Stable for 12 months from date of receipt.
Predicted Protein Size:	68686 Da
Gene Name:	prostaglandin-endoperoxide synthase 1
Database Link:	NP_000953 Entrez Gene 5742 Human P23219
Synonyms:	COX1; COX3; HS; PCOX1; PES-1; PGG; PGHS-1; PGHS1; PHS1; PTGHS
Protein Families:	Druggable Genome, Transmembrane
Protein Pathways:	Arachidonic acid metabolism, Metabolic pathways



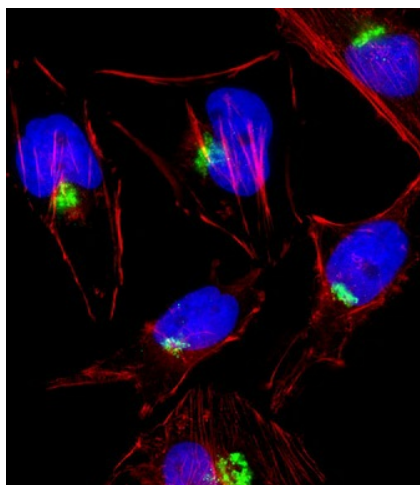
[View online »](#)

Product images:

PTGS1 Antibody (C-term) (Cat. #TA324737) western blot analysis in A431, K562 cell line lysates (35ug/lane). This demonstrates the PTGS1 antibody detected the PTGS1 protein (arrow).



Formalin-fixed and paraffin-embedded human prostate carcinoma tissue reacted with PTGS1 antibody (C-term) (Cat. #TA324737), which was peroxidase-conjugated to the secondary antibody, followed by DAB staining. This data demonstrates the use of this antibody for immunohistochemistry; clinical relevance has not been evaluated.



IF image of HeLa cell stained with PTGS1 Antibody (C-term) (Cat#TA324737). HeLa cells were incubated with PTGS1 primary antibody (1:25, 1 h at 37°C). For secondary antibody, Alexa Fluor® 488 conjugated donkey anti-rabbit antibody (1:400). Cytoplasmic actin was counterstained with Alexa Fluor® 555 (red) conjugated Phalloidin (7 units/ml). PTGS1 immunoreactivity is localized to Golgi significantly.