

Product datasheet for **TA324736S**

STIP1 Rabbit Polyclonal Antibody

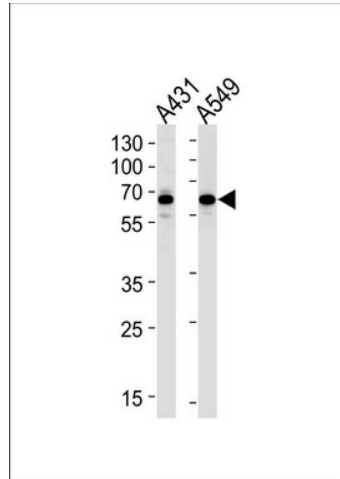
Product data:

Product Type:	Primary Antibodies
Applications:	FC, IHC, WB
Recommended Dilution:	WB: 1:1000, IHC: 1:50~100, FC: 1:10~50
Reactivity:	Human (Predicted: Mouse, Rat, Bovine, Hamster)
Host:	Rabbit
Isotype:	IgG
Clonality:	Polyclonal
Immunogen:	This STIP1 antibody is generated from rabbits immunized with a KLH conjugated synthetic peptide between 269-297 amino acids from the Central region of human STIP1.
Formulation:	Purified polyclonal antibody supplied in PBS with 0.09% (W/V) sodium azide.
Concentration:	lot specific
Purification:	This antibody is prepared by Saturated Ammonium Sulfate (SAS) precipitation followed by dialysis against PBS.
Conjugation:	Unconjugated
Storage:	Store at -20°C as received.
Stability:	Stable for 12 months from date of receipt.
Predicted Protein Size:	62639 Da
Gene Name:	stress induced phosphoprotein 1
Database Link:	NP_006810 Entrez Gene 20867 Mouse Entrez Gene 192277 Rat Entrez Gene 10963 Human P31948
Synonyms:	HEL-S-94n; HOP; IEF-SSP-3521; P60; STI1; STI1L
Protein Families:	Stem cell - Pluripotency
Protein Pathways:	Prion diseases

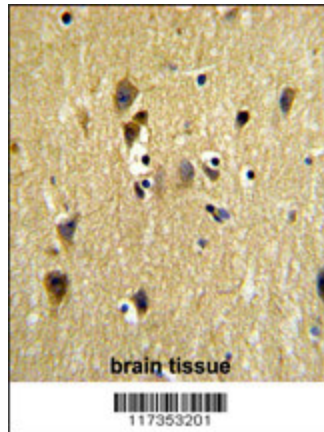


[View online »](#)

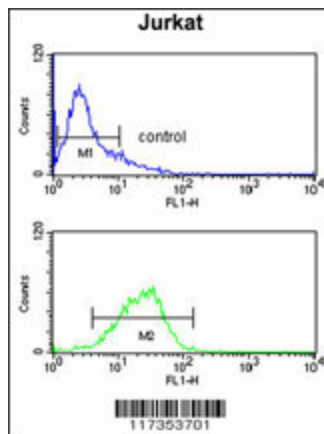
Product images:



STIP1 Antibody (Center) (Cat.# [TA324736]) western blot analysis in A431, A549 cell line lysates (35ug/lane). This demonstrates the STIP1 antibody detected the STIP1 protein (arrow).



Formalin-fixed and paraffin-embedded human testis tissue reacted with STIP1 Antibody (Center) (Cat.# [TA324736]), which was peroxidase-conjugated to the secondary antibody, followed by DAB staining. This data demonstrates the use of this antibody for immunohistochemistry; clinical relevance has not been evaluated.



STIP1 Antibody (Center) (Cat. # [TA324736]) flow cytometry analysis of Jurkat cells (bottom histogram) compared to a negative control cell (top histogram). FITC-conjugated goat-anti-rabbit secondary antibodies were used for the analysis.