

## Product datasheet for **TA324735S**

### STIP1 Rabbit Polyclonal Antibody

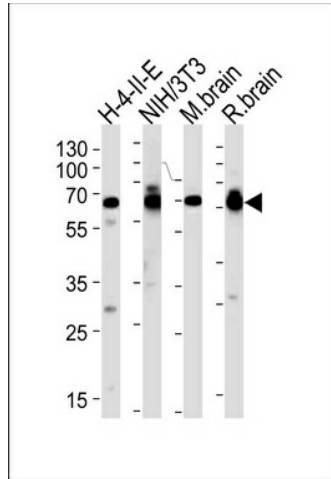
#### Product data:

Product Type:	Primary Antibodies
Applications:	FC, WB
Recommended Dilution:	WB: 1:1000, FC: 1:10~50
Reactivity:	Human, Mouse (Predicted: Rat, Bovine, Hamster, Monkey)
Host:	Rabbit
Isotype:	IgG
Clonality:	Polyclonal
Immunogen:	This STIP1 antibody is generated from rabbits immunized with a KLH conjugated synthetic peptide between 461-488 amino acids from the C-terminal region of human STIP1.
Formulation:	Purified polyclonal antibody supplied in PBS with 0.09% (W/V) sodium azide.
Concentration:	lot specific
Purification:	This antibody is prepared by Saturated Ammonium Sulfate (SAS) precipitation followed by dialysis against PBS.
Conjugation:	Unconjugated
Storage:	Store at -20°C as received.
Stability:	Stable for 12 months from date of receipt.
Predicted Protein Size:	62639 Da
Gene Name:	stress induced phosphoprotein 1
Database Link:	<a href="#">NP_006810</a> <a href="#">Entrez Gene 20867 Mouse</a> <a href="#">Entrez Gene 192277 Rat</a> <a href="#">Entrez Gene 717926 Monkey</a> <a href="#">Entrez Gene 10963 Human</a> <a href="#">P31948</a>
Synonyms:	HEL-S-94n; HOP; IEF-SSP-3521; P60; STI1; STI1L
Protein Families:	Stem cell - Pluripotency
Protein Pathways:	Prion diseases

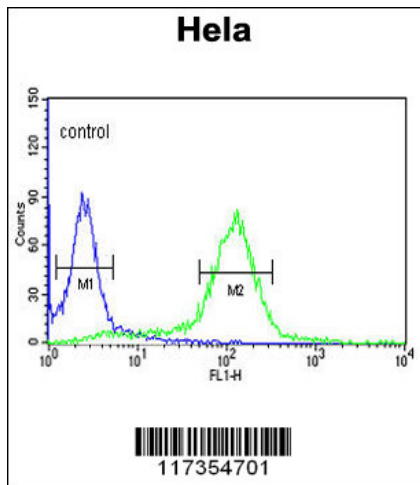


[View online »](#)

Product images:



Western blot analysis of lysates from H-4-II-E, mouse NIH/3T3 cell line, mouse brain and rat brain tissues (from left to right), using STIP1 Antibody (C-term) (Cat. #[TA324735]). [TA324735] was diluted at 1:1000 at each lane. A goat anti-rabbit (HRP) at 1:5000 dilution was used as the secondary antibody. Lysates at 35ug per lane.



STIP1 Antibody (C-term) (Cat. #[TA324735]) flow cytometric analysis of HeLa cells (right histogram) compared to a negative control cell (left histogram). FITC-conjugated goat-anti-rabbit secondary antibodies were used for the analysis.