

Product datasheet for **TA324735**

STIP1 Rabbit Polyclonal Antibody

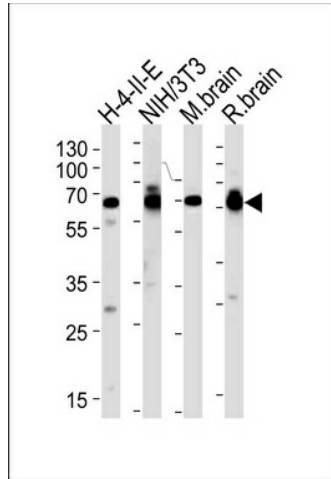
Product data:

| | |
|-------------------------|---|
| Product Type: | Primary Antibodies |
| Applications: | FC, WB |
| Recommended Dilution: | WB: 1:1000, FC: 1:10~50 |
| Reactivity: | Human, Mouse (Predicted: Rat, Bovine, Hamster, Monkey) |
| Host: | Rabbit |
| Isotype: | IgG |
| Clonality: | Polyclonal |
| Immunogen: | This STIP1 antibody is generated from rabbits immunized with a KLH conjugated synthetic peptide between 461-488 amino acids from the C-terminal region of human STIP1. |
| Formulation: | Purified polyclonal antibody supplied in PBS with 0.09% (W/V) sodium azide. |
| Concentration: | lot specific |
| Purification: | This antibody is prepared by Saturated Ammonium Sulfate (SAS) precipitation followed by dialysis against PBS. |
| Conjugation: | Unconjugated |
| Storage: | Store at -20°C as received. |
| Stability: | Stable for 12 months from date of receipt. |
| Predicted Protein Size: | 62639 Da |
| Gene Name: | stress induced phosphoprotein 1 |
| Database Link: | NP_006810 Entrez Gene 20867 Mouse Entrez Gene 192277 Rat Entrez Gene 717926 Monkey Entrez Gene 10963 Human P31948 |
| Synonyms: | HEL-S-94n; HOP; IEF-SSP-3521; P60; STI1; STI1L |
| Protein Families: | Stem cell - Pluripotency |
| Protein Pathways: | Prion diseases |

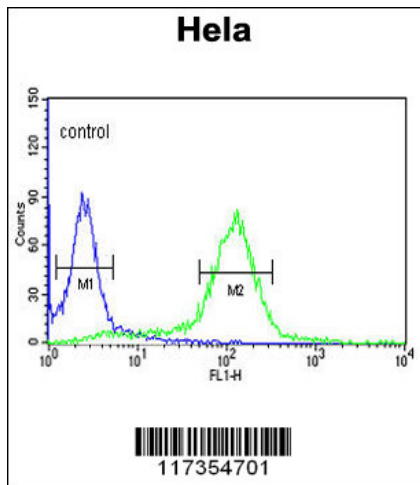


[View online »](#)

Product images:



Western blot analysis of lysates from H-4-II-E, mouse NIH/3T3 cell line, mouse brain and rat brain tissues (from left to right), using STIP1 Antibody (C-term) (Cat. #TA324735). TA324735 was diluted at 1:1000 at each lane. A goat anti-rabbit (HRP) at 1:5000 dilution was used as the secondary antibody. Lysates at 35ug per lane.



STIP1 Antibody (C-term) (Cat. #TA324735) flow cytometric analysis of HeLa cells (right histogram) compared to a negative control cell (left histogram). FITC-conjugated goat-anti-rabbit secondary antibodies were used for the analysis.