

## Product datasheet for **TA324734**

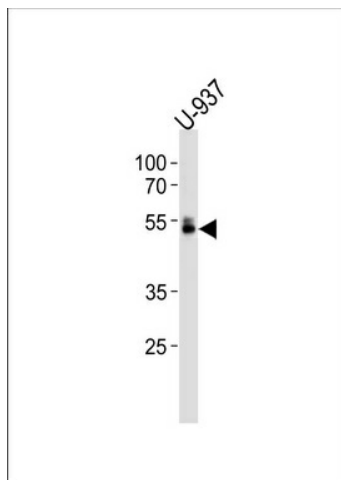
### **RUNX1 Rabbit Polyclonal Antibody**

#### **Product data:**

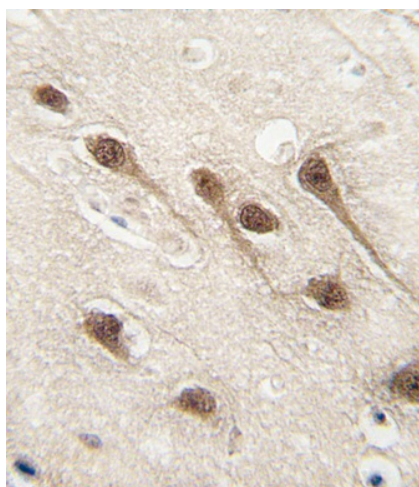
<b>Product Type:</b>	Primary Antibodies
<b>Applications:</b>	FC, IF, IHC, WB
<b>Recommended Dilution:</b>	WB: 1:1000, IHC: 1:10~50, IF: 1:10~50, FC: 1:10~50
<b>Reactivity:</b>	Human
<b>Host:</b>	Rabbit
<b>Isotype:</b>	IgG
<b>Clonality:</b>	Polyclonal
<b>Immunogen:</b>	This RUNX1 antibody is generated from rabbits immunized with a KLH conjugated synthetic peptide between 227-255 amino acids from human RUNX1.
<b>Formulation:</b>	Purified polyclonal antibody supplied in PBS with 0.09% (W/V) sodium azide.
<b>Concentration:</b>	lot specific
<b>Purification:</b>	This antibody is purified through a protein A column, followed by peptide affinity purification.
<b>Conjugation:</b>	Unconjugated
<b>Storage:</b>	Store at -20°C as received.
<b>Stability:</b>	Stable for 12 months from date of receipt.
<b>Predicted Protein Size:</b>	48737 Da
<b>Gene Name:</b>	runt related transcription factor 1
<b>Database Link:</b>	<a href="#">NP_001001890</a> <a href="#">Entrez Gene 861 Human</a> <a href="#">Q01196</a>
<b>Synonyms:</b>	AML1; AML1-EVI-1; AMLCR1; CBFA2; EVI-1; PEBP2aB
<b>Protein Families:</b>	Druggable Genome, ES Cell Differentiation/IPS, Transcription Factors
<b>Protein Pathways:</b>	Acute myeloid leukemia, Chronic myeloid leukemia, Pathways in cancer



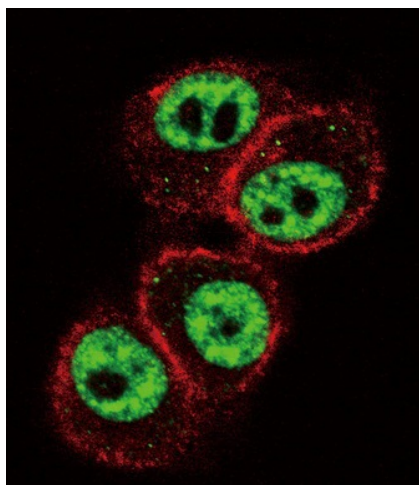
[View online »](#)

**Product images:**

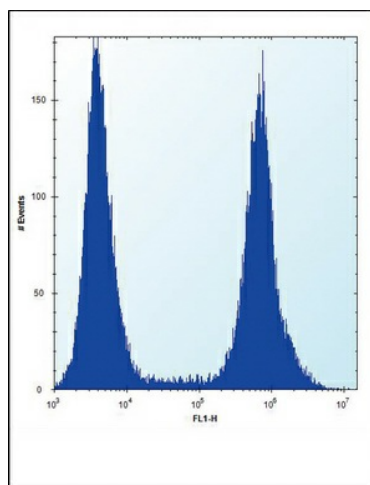
RUNX1 Antibody (S276) (Cat. #TA324734) western blot analysis in U-937 cell line lysates (35ug/lane). This demonstrates the RUNX1 antibody detected the RUNX1 protein (arrow).



Formalin-fixed and paraffin-embedded human brain tissue reacted with RUNX1 Antibody (S276) (Cat.#TA324734), which was peroxidase-conjugated to the secondary antibody, followed by DAB staining. This data demonstrates the use of this antibody for immunohistochemistry; clinical relevance has not been evaluated.



Confocal immunofluorescent analysis of RUNX1 Antibody (S276) (Cat#TA324734) with HeLa cell followed by Alexa Fluor 488-conjugated goat anti-rabbit IgG (green). Actin filaments have been labeled with Alexa Fluor 555 phalloidin (red).



RUNX1 Antibody (S276) (Cat. #TA324734) flow cytometric analysis of HeLa cells (right histogram) compared to a negative control cell (left histogram). FITC-conjugated donkey-anti-rabbit secondary antibodies were used for the analysis.