

Product datasheet for **TA324733S**

HNF 4 alpha (HNF4A) Rabbit Polyclonal Antibody

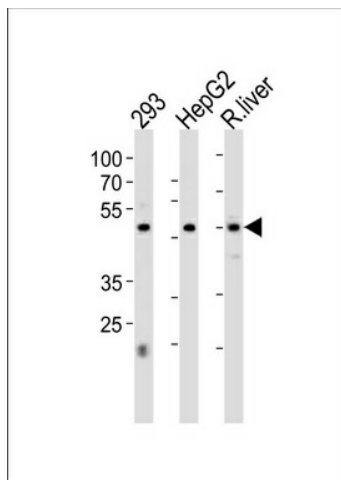
Product data:

Product Type:	Primary Antibodies
Applications:	FC, IF, IHC, WB
Recommended Dilution:	WB: 1:1000, IHC: 1:10~50, IF: 1:10~50, FC: 1:10~50
Reactivity:	Human, Rat (Predicted: Mouse)
Host:	Rabbit
Isotype:	IgG
Clonality:	Polyclonal
Immunogen:	This HNF4A antibody is generated from rabbits immunized with a KLH conjugated synthetic peptide between 281-312 amino acids from the Central region of human HNF4A.
Formulation:	Purified polyclonal antibody supplied in PBS with 0.09% (W/V) sodium azide.
Concentration:	lot specific
Purification:	This antibody is prepared by Saturated Ammonium Sulfate (SAS) precipitation followed by dialysis against PBS.
Conjugation:	Unconjugated
Storage:	Store at -20°C as received.
Stability:	Stable for 12 months from date of receipt.
Predicted Protein Size:	52785 Da
Gene Name:	hepatocyte nuclear factor 4 alpha
Database Link:	NP_000448 Entrez Gene 15378 Mouse Entrez Gene 25735 Rat Entrez Gene 3172 Human P41235
Synonyms:	FRTS4; HNF4; HNF4a7; HNF4a8; HNF4a9; HNF4alpha; MODY; MODY1; NR2A1; NR2A21; TCF; TCF14
Protein Families:	Druggable Genome, ES Cell Differentiation/IPS, Nuclear Hormone Receptor, Transcription Factors
Protein Pathways:	Maturity onset diabetes of the young

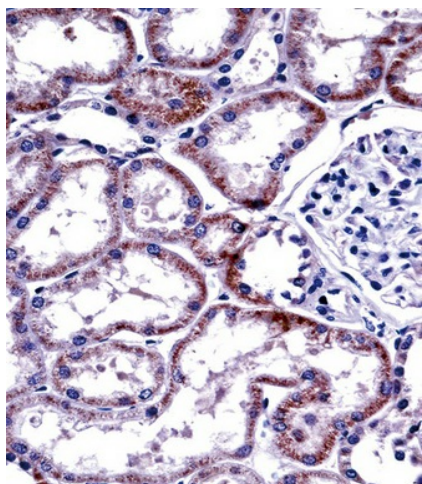


[View online »](#)

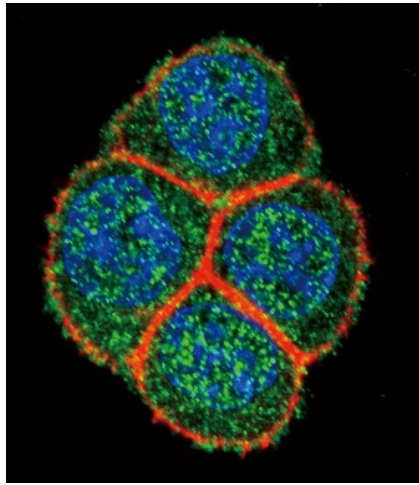
Product images:



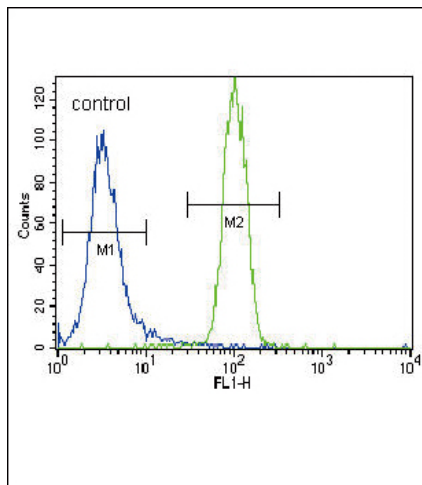
HNF4A Antibody (Center) (Cat. #[TA324733]) western blot analysis in 293, HepG2 cell line and rat liver tissue lysates (35ug/lane). This demonstrates the HNF4A antibody detected the HNF4A protein (arrow).



HNF4A Antibody (Center) ([TA324733]) immunohistochemistry analysis in formalin fixed and paraffin embedded human kidney tissue followed by peroxidase conjugation of the secondary antibody and DAB staining. This data demonstrates the use of HNF4A Antibody (Center) for immunohistochemistry. Clinical relevance has not been evaluated.



Confocal immunofluorescent analysis of HNF4A Antibody (Center) (Cat#[TA324733]) with Hela cell followed by Alexa Fluor 488-conjugated goat anti-rabbit IgG (green). Actin filaments have been labeled with Alexa Fluor 555 phalloidin (red). DAPI was used to stain the cell nuclear (blue).



HNF4A Antibody (Center) (Cat. #[TA324733]) flow cytometric analysis of NCI-H460 cells (right histogram) compared to a negative control cell (left histogram). FITC-conjugated goat-anti-rabbit secondary antibodies were used for the analysis.