

## Product datasheet for **TA324732**

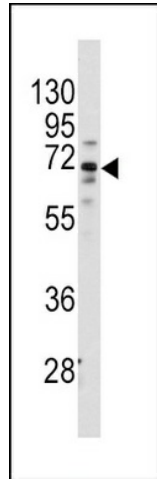
### Frizzled homolog 1 (FZD1) Rabbit Polyclonal Antibody

#### Product data:

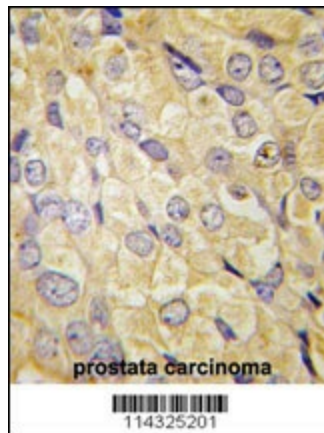
Product Type:	Primary Antibodies
Applications:	FC, IHC, WB
Recommended Dilution:	WB: 1:1000, FC: 1:10~50, IHC: 1:10~50
Reactivity:	Human (Predicted: Mouse, Rat)
Host:	Rabbit
Isotype:	IgG
Clonality:	Polyclonal
Immunogen:	This FZD1 antibody is generated from rabbits immunized with a KLH conjugated synthetic peptide between 367-396 amino acids from the Central region of human FZD1.
Formulation:	Purified polyclonal antibody supplied in PBS with 0.09% (W/V) sodium azide.
Concentration:	lot specific
Purification:	This antibody is prepared by Saturated Ammonium Sulfate (SAS) precipitation followed by dialysis against PBS.
Conjugation:	Unconjugated
Storage:	Store at -20°C as received.
Stability:	Stable for 12 months from date of receipt.
Predicted Protein Size:	71158 Da
Gene Name:	frizzled class receptor 1
Database Link:	<a href="#">NP_003496</a> <a href="#">Entrez Gene 14362 Mouse</a> <a href="#">Entrez Gene 58868 Rat</a> <a href="#">Entrez Gene 8321 Human</a> <a href="#">Q9UP38</a>
Synonyms:	DKFZp564G072; FLJ95923
Protein Families:	Druggable Genome, GPCR, Transmembrane
Protein Pathways:	Basal cell carcinoma, Colorectal cancer, Melanogenesis, Pathways in cancer, Wnt signaling pathway



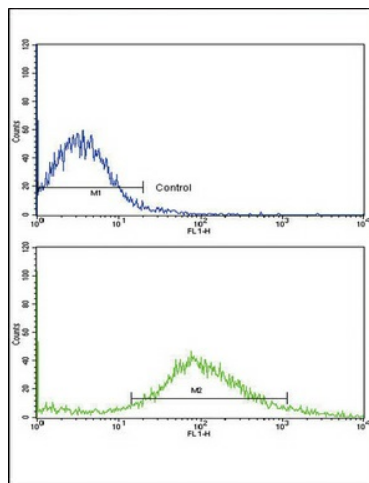
[View online »](#)

**Product images:**


Western blot analysis of anti-FZD1 Antibody (center) (Cat.#TA324732) in HeLa cell line lysates (35ug/lane).FZD1 (arrow) was detected using the purified Pab.



Formalin-fixed and paraffin-embedded human prostata carcinoma tissue reacted with FZD1 antibody (Center) (Cat.#TA324732), which was peroxidase-conjugated to the secondary antibody, followed by DAB staining. This data demonstrates the use of this antibody for immunohistochemistry; clinical relevance has not been evaluated.



Flow cytometric analysis of NCI-H292 cells using FZD1 Antibody (Center) (bottom histogram) compared to a negative control cell (top histogram). FITC-conjugated goat-anti-rabbit secondary antibodies were used for the analysis.