

Product datasheet for **TA324731S**

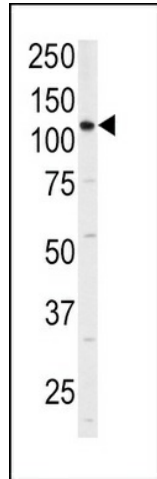
Integrin alpha 6 (ITGA6) Rabbit Polyclonal Antibody

Product data:

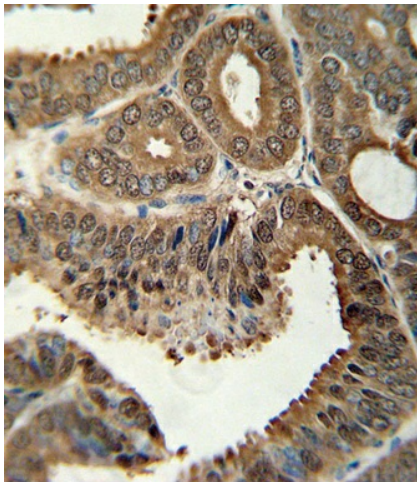
Product Type:	Primary Antibodies
Applications:	IF, IHC, WB
Recommended Dilution:	IF: 1:200, WB: 1:1000, IHC: 1:10~50
Reactivity:	Human (Predicted: Chicken)
Host:	Rabbit
Isotype:	IgG
Clonality:	Polyclonal
Immunogen:	This ITGA6 antibody is generated from rabbits immunized with a KLH conjugated synthetic peptide between 1043-1072 amino acids from human ITGA6.
Formulation:	Purified polyclonal antibody supplied in PBS with 0.09% (W/V) sodium azide.
Concentration:	lot specific
Purification:	This antibody is purified through a protein A column, followed by peptide affinity purification.
Conjugation:	Unconjugated
Storage:	Store at -20°C as received.
Stability:	Stable for 12 months from date of receipt.
Predicted Protein Size:	126606 Da
Gene Name:	integrin subunit alpha 6
Database Link:	NP_000201 Entrez Gene 3655 Human P23229
Synonyms:	CD49f; ITGA6B; VLA-6
Protein Families:	Druggable Genome, ES Cell Differentiation/IPS, Transmembrane
Protein Pathways:	Arrhythmogenic right ventricular cardiomyopathy (ARVC), Cell adhesion molecules (CAMs), Dilated cardiomyopathy, ECM-receptor interaction, Focal adhesion, Hematopoietic cell lineage, Hypertrophic cardiomyopathy (HCM), Pathways in cancer, Regulation of actin cytoskeleton, Small cell lung cancer



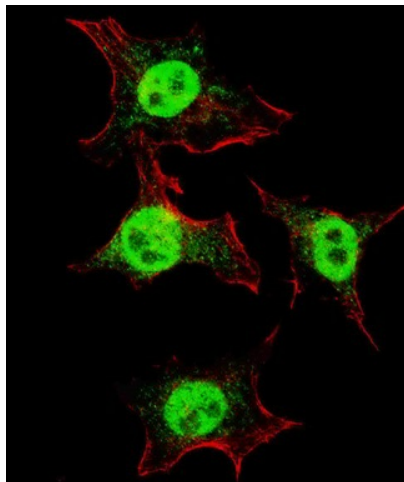
[View online »](#)

Product images:

Western blot analysis of anti-ITGA6 Antibody (isoform 2 S1064) (Cat.#[TA324731]) in 293 cell line lysates (35ug/lane). ITGA6 (arrow) was detected using the purified Pab.



Formalin-fixed and paraffin-embedded human colon carcinoma tissue reacted with ITGA6 Antibody (isoform 2 S1064) (Cat.#[TA324731]), which was peroxidase-conjugated to the secondary antibody, followed by DAB staining. This data demonstrates the use of this antibody for immunohistochemistry; clinical relevance has not been evaluated.



IF image of HeLa cells stained with ITGA6 (isoform 2 S1064) antibody. HeLa cells were incubated with [TA324731] ITGA6 (isoform 2 S1064) primary antibody (1:200, 2 h at RT). For secondary antibody, Alexa Fluor® 488 conjugated donkey anti-rabbit antibody (green) was used (1:1000, 1h). Nuclei were counterstained with Hoechst 33342 (blue). Note the highly specific localization of the ITGA6 mainly to the nucleus, supported by Human Protein Atlas Data (<http://www.proteinatlas.org/ENSG00000091409>).

