

Product datasheet for **TA324731**

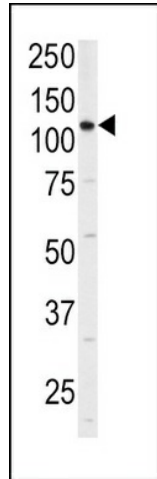
Integrin alpha 6 (ITGA6) Rabbit Polyclonal Antibody

Product data:

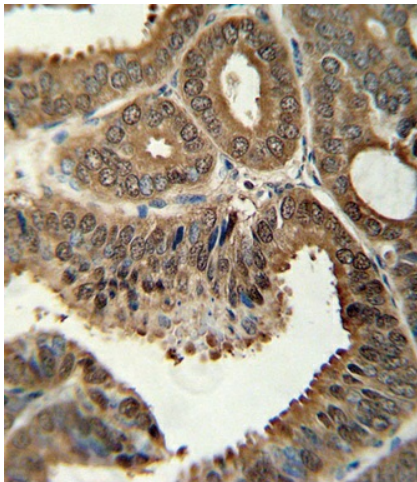
| | |
|-------------------------|---|
| Product Type: | Primary Antibodies |
| Applications: | IF, IHC, WB |
| Recommended Dilution: | IF: 1:200, WB: 1:1000, IHC: 1:10~50 |
| Reactivity: | Human (Predicted: Chicken) |
| Host: | Rabbit |
| Isotype: | IgG |
| Clonality: | Polyclonal |
| Immunogen: | This ITGA6 antibody is generated from rabbits immunized with a KLH conjugated synthetic peptide between 1043-1072 amino acids from human ITGA6. |
| Formulation: | Purified polyclonal antibody supplied in PBS with 0.09% (W/V) sodium azide. |
| Concentration: | lot specific |
| Purification: | This antibody is purified through a protein A column, followed by peptide affinity purification. |
| Conjugation: | Unconjugated |
| Storage: | Store at -20°C as received. |
| Stability: | Stable for 12 months from date of receipt. |
| Predicted Protein Size: | 126606 Da |
| Gene Name: | integrin subunit alpha 6 |
| Database Link: | NP_000201 Entrez Gene 3655 Human P23229 |
| Synonyms: | CD49f; ITGA6B; VLA-6 |
| Protein Families: | Druggable Genome, ES Cell Differentiation/IPS, Transmembrane |
| Protein Pathways: | Arrhythmogenic right ventricular cardiomyopathy (ARVC), Cell adhesion molecules (CAMs), Dilated cardiomyopathy, ECM-receptor interaction, Focal adhesion, Hematopoietic cell lineage, Hypertrophic cardiomyopathy (HCM), Pathways in cancer, Regulation of actin cytoskeleton, Small cell lung cancer |



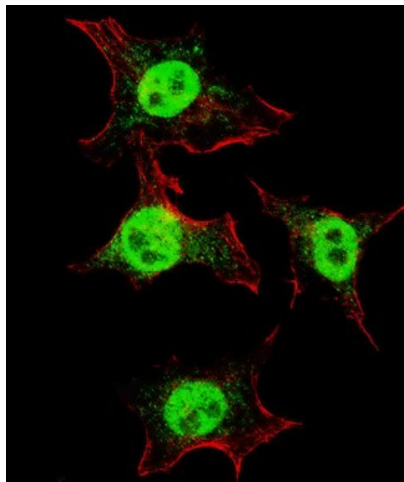
[View online »](#)

Product images:

Western blot analysis of anti-ITGA6 Antibody (isoform 2 S1064) (Cat.#TA324731) in 293 cell line lysates (35ug/lane). ITGA6 (arrow) was detected using the purified Pab.



Formalin-fixed and paraffin-embedded human colon carcinoma tissue reacted with ITGA6 Antibody (isoform 2 S1064) (Cat.#TA324731), which was peroxidase-conjugated to the secondary antibody, followed by DAB staining. This data demonstrates the use of this antibody for immunohistochemistry; clinical relevance has not been evaluated.



IF image of HeLa cells stained with ITGA6 (isoform 2 S1064) antibody. HeLa cells were incubated with TA324731 ITGA6 (isoform 2 S1064) primary antibody (1:200, 2 h at RT). For secondary antibody, Alexa Fluor® 488 conjugated donkey anti-rabbit antibody (green) was used (1:1000, 1h). Nuclei were counterstained with Hoechst 33342 (blue). Note the highly specific localization of the ITGA6 mainly to the nucleus, supported by Human Protein Atlas Data (<http://www.proteinatlas.org/ENSG00000091409>).

