

## Product datasheet for **TA324730S**

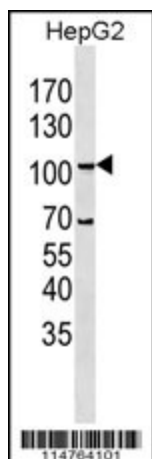
### LGR5 Rabbit Polyclonal Antibody

#### Product data:

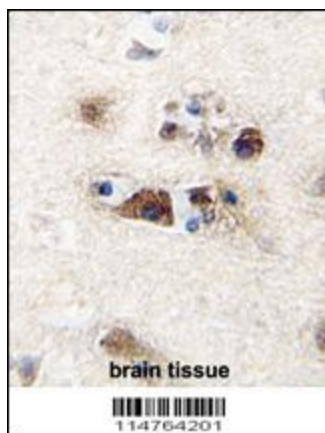
Product Type:	Primary Antibodies
Applications:	FC, IF, IHC, WB
Recommended Dilution:	WB: 1:1000, IHC: 1:10~50, FC: 1:10~50, IF: 1:10~50
Reactivity:	Human
Host:	Rabbit
Isotype:	IgG
Clonality:	Polyclonal
Immunogen:	This LGR5/GPR49 antibody is generated from rabbits immunized with a KLH conjugated synthetic peptide between 238-270 amino acids from the N-terminal region of human LGR5/GPR49.
Formulation:	Purified polyclonal antibody supplied in PBS with 0.09% (W/V) sodium azide.
Concentration:	lot specific
Purification:	This antibody is prepared by Saturated Ammonium Sulfate (SAS) precipitation followed by dialysis against PBS.
Conjugation:	Unconjugated
Storage:	Store at -20°C as received.
Stability:	Stable for 12 months from date of receipt.
Predicted Protein Size:	99998 Da
Gene Name:	leucine-rich repeat containing G protein-coupled receptor 5
Database Link:	<a href="#">NP_003658</a> <a href="#">Entrez Gene 8549 Human</a> <a href="#">O75473</a>
Synonyms:	FEX; GPR49; GPR67; GRP49; HG38
Protein Families:	Druggable Genome, GPCR, Transmembrane



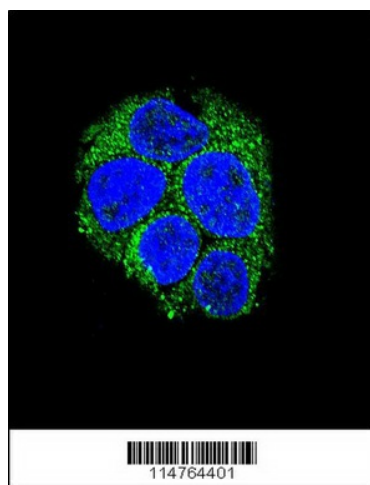
[View online »](#)

**Product images:**


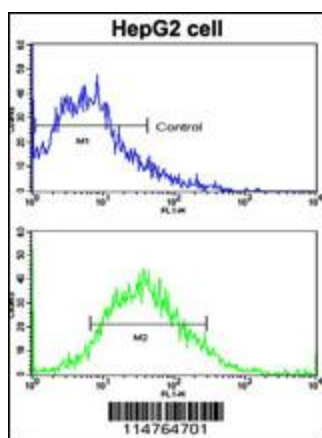
LGR5/GPR49 Antibody (N-term) (Cat.#[TA324730]) western blot analysis in HepG2 cell line lysates (35ug/lane). This demonstrates the LGR5/GPR49 antibody detected the LGR5/GPR49 protein (arrow) (Kindly offered by Dr. Li).



Formalin-fixed and paraffin-embedded human brain tissue reacted with LGR5/GPR49 antibody (N-term) (Cat.#[TA324730]), which was peroxidase-conjugated to the secondary antibody, followed by DAB staining. This data demonstrates the use of this antibody for immunohistochemistry; clinical relevance has not been evaluated.



Confocal immunofluorescent analysis of LGR5/GPR49 Antibody (N-term) (Cat#[TA324730]) with HepG2 cell followed by Alexa Fluor 488-conjugated goat anti-rabbit IgG (green). DAPI was used to stain the cell nuclear (blue).



Flow cytometric analysis of HepG2 cells using LGR5/GPR49 Antibody (N-term) (bottom histogram) compared to a negative control cell (top histogram). FITC-conjugated goat-anti-rabbit secondary antibodies were used for the analysis.