

Product datasheet for **TA324729S**

Vimentin (VIM) Rabbit Polyclonal Antibody

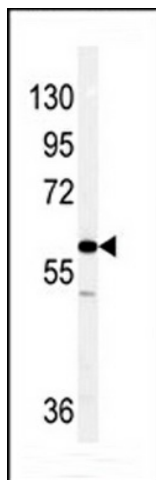
Product data:

Product Type:	Primary Antibodies
Applications:	FC, IF, IHC, WB
Recommended Dilution:	IF: 1:100, WB: 1:1000, IHC: 1:10~50, FC: 1:10~50
Reactivity:	Human (Predicted: Mouse, Rat, Bovine, Chicken, Hamster, Pig, Monkey, Xenopus)
Host:	Rabbit
Isotype:	IgG
Clonality:	Polyclonal
Immunogen:	This Vimentin antibody is generated from rabbits immunized with a KLH conjugated synthetic peptide between 430-457 amino acids from the C-terminal region of human Vimentin.
Formulation:	Purified polyclonal antibody supplied in PBS with 0.09% (W/V) sodium azide.
Concentration:	lot specific
Purification:	This antibody is prepared by Saturated Ammonium Sulfate (SAS) precipitation followed by dialysis against PBS.
Conjugation:	Unconjugated
Storage:	Store at -20°C as received.
Stability:	Stable for 12 months from date of receipt.
Predicted Protein Size:	53652 Da
Gene Name:	vimentin
Database Link:	NP_003371 Entrez Gene 22352 Mouse Entrez Gene 81818 Rat Entrez Gene 705289 Monkey Entrez Gene 7431 Human P08670
Synonyms:	CTRCT30; HEL113
Protein Families:	ES Cell Differentiation/IPS

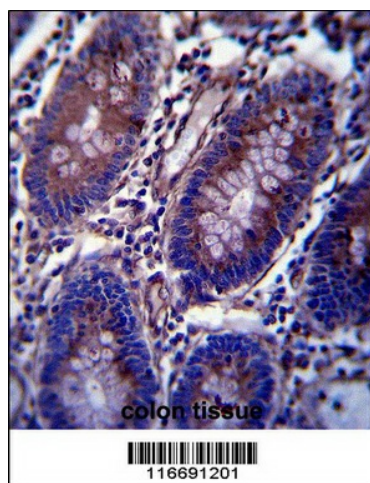


[View online »](#)

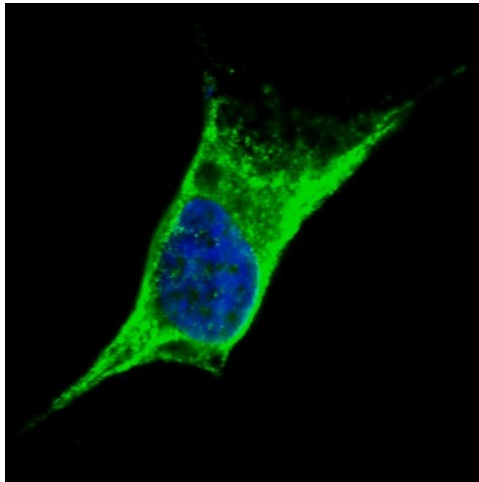
Product images:



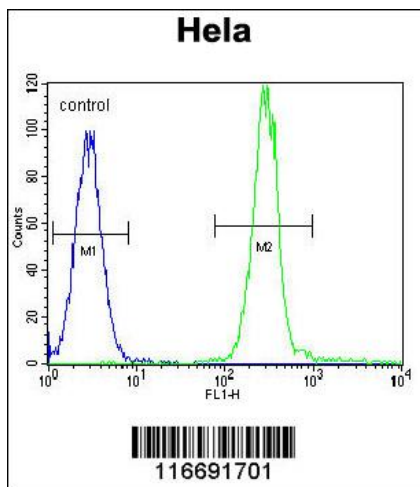
Western blot analysis of Vimentin antibody (C-term) (Cat.#[TA324729]) in NCI-H460 cell line lysates (35ug/lane). Vimentin (arrow) was detected using the purified Pab.



Vimentin Antibody (C-term) (Cat. # [TA324729]) immunohistochemistry analysis in formalin fixed and paraffin embedded human colon tissue followed by peroxidase conjugation of the secondary antibody and DAB staining. This data demonstrates the use of Vimentin Antibody (C-term) for immunohistochemistry. Clinical relevance has not been evaluated.



IF image of SY5Y cells stained with Vimentin (C-term) antibody. SY5Y cells were incubated with [TA324729] Vimentin (C-term) primary antibody (1:100, 2 h at RT). For secondary antibody, Alexa Fluor® 488 conjugated donkey anti-rabbit antibody (green) was used (1:1000, 1h). Nuclei were counterstained with Hoechst 33342 (blue). Note the highly specific localization of the Vimentin immunosignal to the cytoskeleton, supported by Human Protein Atlas Data (<http://www.proteinatlas.org/ENSG00000026025>).



Vimentin Antibody (C-term) (Cat. #[TA324729]) flow cytometric analysis of HeLa cells (right histogram) compared to a negative control cell (left histogram). FITC-conjugated goat-anti-rabbit secondary antibodies were used for the analysis.