

## Product datasheet for **TA324727S**

### AKR1B1 Rabbit Polyclonal Antibody

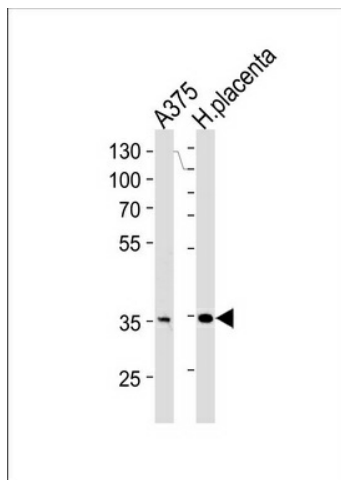
#### Product data:

Product Type:	Primary Antibodies
Applications:	IF, IHC, WB
Recommended Dilution:	WB: 1:1000, IHC: 1:10~50, IF: 1:10~50
Reactivity:	Human
Host:	Rabbit
Isotype:	IgG
Clonality:	Polyclonal
Immunogen:	This AKR1B1 antibody is generated from rabbits immunized with a KLH conjugated synthetic peptide between 290-316 amino acids from the C-terminal region of human AKR1B1.
Formulation:	Purified polyclonal antibody supplied in PBS with 0.09% (W/V) sodium azide.
Concentration:	lot specific
Purification:	This antibody is prepared by Saturated Ammonium Sulfate (SAS) precipitation followed by dialysis against PBS.
Conjugation:	Unconjugated
Storage:	Store at -20°C as received.
Stability:	Stable for 12 months from date of receipt.
Predicted Protein Size:	35853 Da
Gene Name:	aldo-keto reductase family 1, member B1 (aldose reductase)
Database Link:	<a href="#">NP_001619</a> <a href="#">Entrez Gene 231 Human</a> <a href="#">P15121</a>
Synonyms:	ADR; ALDR1; ALR2; AR
Protein Families:	Druggable Genome
Protein Pathways:	Fructose and mannose metabolism, Galactose metabolism, Glycerolipid metabolism, Metabolic pathways, Pentose and glucuronate interconversions, Pyruvate metabolism

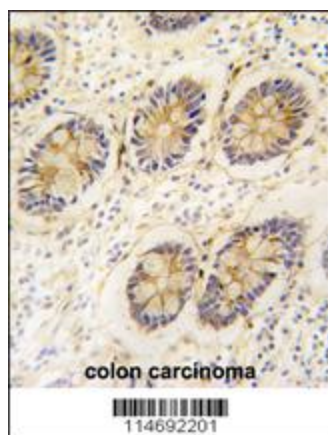


[View online »](#)

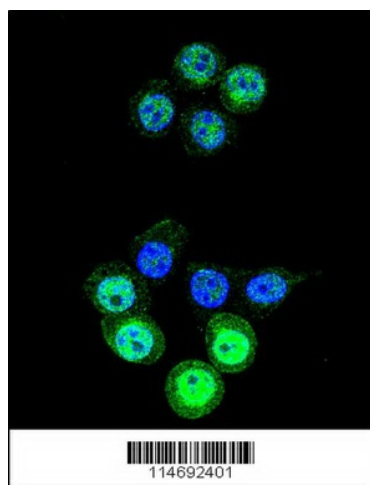
## Product images:



AKR1B1 Antibody (C-term) (Cat. #[TA324727]) western blot analysis in A375 cell line and human placenta tissue lysates (35ug/lane). This demonstrates the AKR1B1 antibody detected the AKR1B1 protein (arrow).



Formalin-fixed and paraffin-embedded human colon carcinoma tissue reacted with AKR1B1 antibody (C-term) (Cat.#[TA324727]), which was peroxidase-conjugated to the secondary antibody, followed by DAB staining. This data demonstrates the use of this antibody for immunohistochemistry; clinical relevance has not been evaluated.



Confocal immunofluorescent analysis of AKR1B1 Antibody (C-term) (Cat.#[TA324727]) with 293 cell followed by Alexa Fluor 488-conjugated goat anti-rabbit IgG (green). DAPI was used to stain the cell nuclear (blue).