

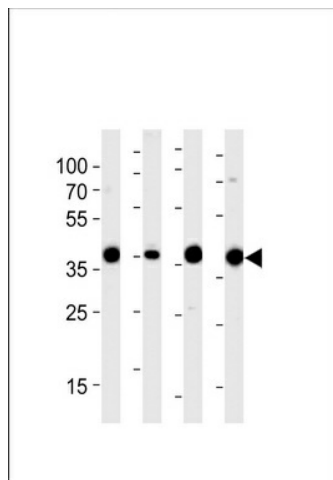
## Product datasheet for TA324726S

### Aldolase (ALDOA) Rabbit Polyclonal Antibody

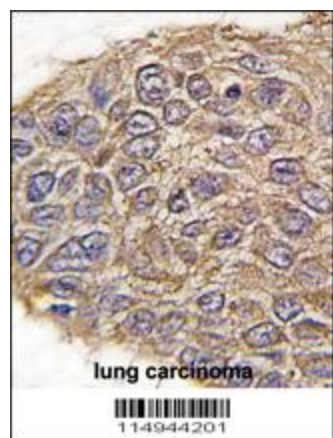
#### Product data:

Product Type:	Primary Antibodies
Applications:	IF, IHC, WB
Recommended Dilution:	WB: 1:1000, IHC: 1:10~50, IF: 1:10~50
Reactivity:	Human (Predicted: Mouse, Rat, Rabbit)
Host:	Rabbit
Isotype:	IgG
Clonality:	Polyclonal
Immunogen:	This Aldolase (ALDOA) antibody is generated from rabbits immunized with a KLH conjugated synthetic peptide between 66-95 amino acids from the N-terminal region of human Aldolase (ALDOA).
Formulation:	Purified polyclonal antibody supplied in PBS with 0.09% (W/V) sodium azide.
Concentration:	lot specific
Purification:	This antibody is prepared by Saturated Ammonium Sulfate (SAS) precipitation followed by dialysis against PBS.
Conjugation:	Unconjugated
Storage:	Store at -20°C as received.
Stability:	Stable for 12 months from date of receipt.
Predicted Protein Size:	39420 Da
Gene Name:	aldolase, fructose-bisphosphate A
Database Link:	<a href="#">NP_000025</a> <a href="#">Entrez Gene 11674 Mouse</a> <a href="#">Entrez Gene 24189 Rat</a> <a href="#">Entrez Gene 226 Human</a> <a href="#">P04075</a>
Synonyms:	ALDA; GSD12; HEL-S-87p
Protein Families:	Druggable Genome
Protein Pathways:	Fructose and mannose metabolism, Glycolysis / Gluconeogenesis, Metabolic pathways, Pentose phosphate pathway

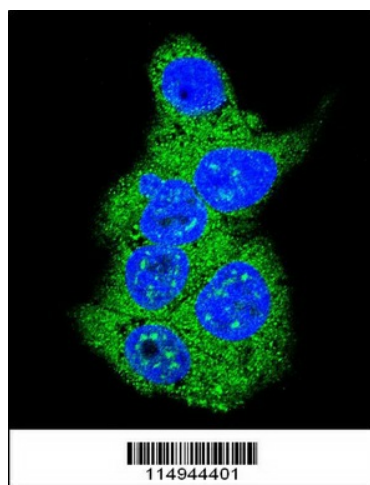

[View online »](#)

**Product images:**


Western blot analysis of lysates from 293, RD, mouse NIH/3T3, rat L6 cell line (from left to right), using ALDOA Antibody (N-term) (Cat. # [TA324726]).[TA324726] was diluted at 1:1000 at each lane. A goat anti-rabbit IgG H&L (HRP) at 1:5000 dilution was used as the secondary antibody. Lysates at 35ug per lane.



Formalin-fixed and paraffin-embedded human lung carcinoma tissue reacted with ALDOA antibody (N-term) (Cat.#[TA324726]), which was peroxidase-conjugated to the secondary antibody, followed by DAB staining. This data demonstrates the use of this antibody for immunohistochemistry; clinical relevance has not been evaluated.



Confocal immunofluorescent analysis of Aldolase (ALDOA) Antibody (N-term) (Cat#[TA324726]) with HepG2 cell followed by Alexa Fluor 488-conjugated goat anti-rabbit IgG (green). DAPI was used to stain the cell nuclear (blue).