

## Product datasheet for **TA324726**

### Aldolase (ALDOA) Rabbit Polyclonal Antibody

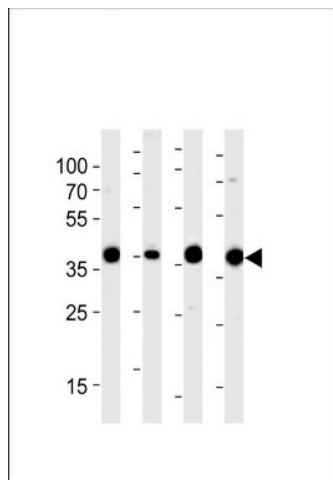
#### Product data:

|                         |  |
|-------------------------|--|
| Product Type:           | Primary Antibodies   |
| Applications:           | IF, IHC, WB  |
| Recommended Dilution:   | WB: 1:1000, IHC: 1:10~50, IF: 1:10~50  |
| Reactivity:             | Human (Predicted: Mouse, Rat, Rabbit)  |
| Host:                   | Rabbit   |
| Isotype:                | IgG  |
| Clonality:              | Polyclonal   |
| Immunogen:              | This Aldolase (ALDOA) antibody is generated from rabbits immunized with a KLH conjugated synthetic peptide between 66-95 amino acids from the N-terminal region of human Aldolase (ALDOA). |
| Formulation:            | Purified polyclonal antibody supplied in PBS with 0.09% (W/V) sodium azide.  |
| Concentration:          | lot specific   |
| Purification:           | This antibody is prepared by Saturated Ammonium Sulfate (SAS) precipitation followed by dialysis against PBS.  |
| Conjugation:            | Unconjugated   |
| Storage:                | Store at -20°C as received.  |
| Stability:              | Stable for 12 months from date of receipt.   |
| Predicted Protein Size: | 39420 Da   |
| Gene Name:              | aldolase, fructose-bisphosphate A  |
| Database Link:          | <a href="#">NP_000025</a><br><a href="#">Entrez Gene 11674 Mouse</a> <a href="#">Entrez Gene 24189 Rat</a> <a href="#">Entrez Gene 226 Human</a><br><a href="#">P04075</a>                 |
| Synonyms:               | ALDA; GSD12; HEL-S-87p   |
| Protein Families:       | Druggable Genome   |
| Protein Pathways:       | Fructose and mannose metabolism, Glycolysis / Gluconeogenesis, Metabolic pathways, Pentose phosphate pathway   |

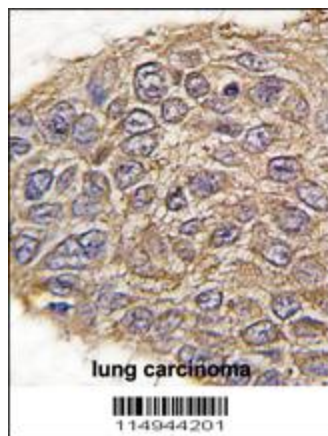


[View online »](#)

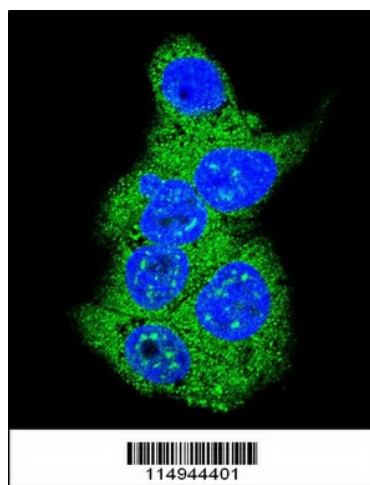
## Product images:



Western blot analysis of lysates from 293, RD, mouse NIH/3T3, rat L6 cell line (from left to right), using ALDOA Antibody (N-term) (Cat. #TA324726). TA324726 was diluted at 1:1000 at each lane. A goat anti-rabbit IgG H&L (HRP) at 1:5000 dilution was used as the secondary antibody. Lysates at 35ug per lane.



Formalin-fixed and paraffin-embedded human lung carcinoma tissue reacted with ALDOA antibody (N-term) (Cat.#TA324726), which was peroxidase-conjugated to the secondary antibody, followed by DAB staining. This data demonstrates the use of this antibody for immunohistochemistry; clinical relevance has not been evaluated.



Confocal immunofluorescent analysis of Aldolase (ALDOA) Antibody (N-term) (Cat#TA324726) with HepG2 cell followed by Alexa Fluor 488-conjugated goat anti-rabbit IgG (green). DAPI was used to stain the cell nuclear (blue).