

## Product datasheet for **TA324725**

### **KLF4 Rabbit Polyclonal Antibody**

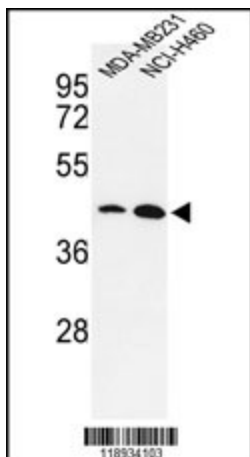
#### **Product data:**

<b>Product Type:</b>	Primary Antibodies
<b>Applications:</b>	IF, WB
<b>Recommended Dilution:</b>	IF: 1:10~50, WB: 1:1000
<b>Reactivity:</b>	Human (Predicted: Mouse, Rat)
<b>Host:</b>	Rabbit
<b>Isotype:</b>	IgG
<b>Clonality:</b>	Polyclonal
<b>Immunogen:</b>	This KLF4 antibody is generated from rabbits immunized with a KLH conjugated synthetic peptide between 481-504 amino acids from human KLF4.
<b>Formulation:</b>	Purified polyclonal antibody supplied in PBS with 0.09% (W/V) sodium azide.
<b>Concentration:</b>	lot specific
<b>Purification:</b>	This antibody is purified through a protein A column, followed by peptide affinity purification.
<b>Conjugation:</b>	Unconjugated
<b>Storage:</b>	Store at -20°C as received.
<b>Stability:</b>	Stable for 12 months from date of receipt.
<b>Predicted Protein Size:</b>	54671 Da
<b>Gene Name:</b>	Kruppel-like factor 4 (gut)
<b>Database Link:</b>	<a href="#">NP_004226</a> <a href="#">Entrez Gene 16600 Mouse</a> <a href="#">Entrez Gene 114505 Rat</a> <a href="#">Entrez Gene 9314 Human</a> <a href="#">O43474</a>
<b>Synonyms:</b>	EZF; GKLF
<b>Protein Families:</b>	Adult stem cells, Embryonic stem cells, ES Cell Differentiation/IPS, Induced pluripotent stem cells, Transcription Factors

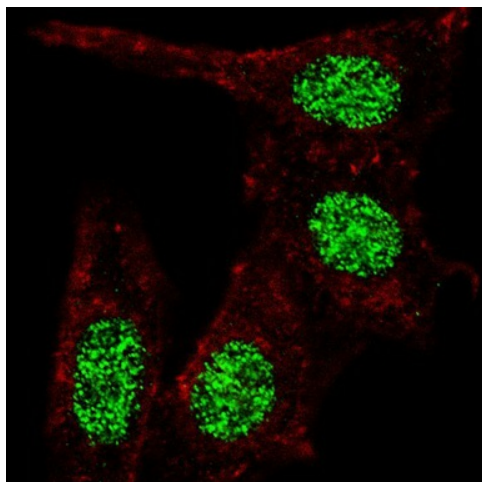


[View online »](#)

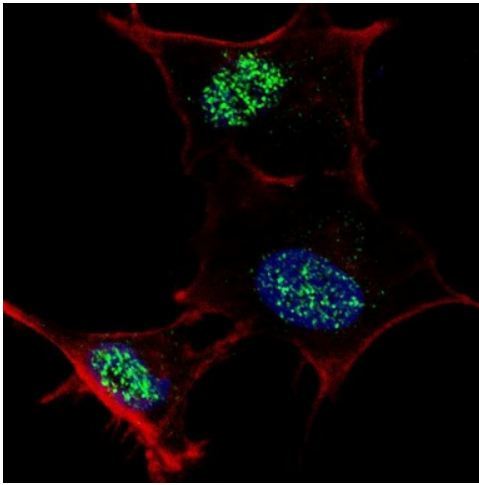
## Product images:



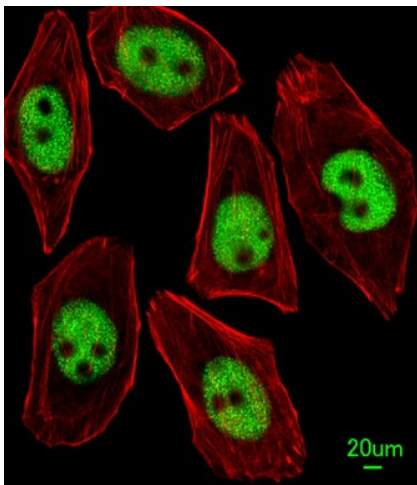
Western blot analysis of KLF4-S457 (Cat.# TA324725) in MDA-MB231, NCI-H460 cell line lysates (35ug/lane). KLF4 (arrow) was detected using the purified Pab.



IF image of HeLa cells stained with TA324725 KLF4 (S457) antibody. HeLa cells were incubated with TA324725 KLF4 (S457) primary antibody (1:100, 2 h at RT). For secondary antibody, Alexa Fluor® 488 conjugated donkey anti-rabbit antibody (green) was used (1:1000, 1h). Cytoplasmic actin was counterstained with Alexa Fluor® 555 (red) conjugated Phalloidin. Note the highly specific localization of the phosphorylated KLF4 immunoreactivity to the nuclei but not the cytoplasm.



IF image of SY5Y cells stained with TA324725 KLF4 (S457) antibody. SY5Y cells were incubated with TA324725 KLF4 (S457) primary antibody (1:100, 2 h at RT). For secondary antibody, Alexa Fluor® 488 conjugated donkey anti-rabbit antibody (green) was used (1:1000, 1h). Cytoplasmic actin was counterstained with Alexa Fluor® 555 (red) conjugated Phalloidin. Note the highly specific localization of the phosphorylated KLF4 immunoreactivity to the nuclei.



Immunofluorescent analysis of U251 cells, using KLF4 Antibody (Cat. #TA324725). TA324725 was diluted at 1:25 dilution. Alexa Fluor 488-conjugated goat anti-rabbit IgG at 1:400 dilution was used as the secondary antibody (green). Cytoplasmic actin was counterstained with Dylight Fluor® 554 (red) conjugated Phalloidin (red).