

Product datasheet for **TA324724S**

KLF4 Rabbit Polyclonal Antibody

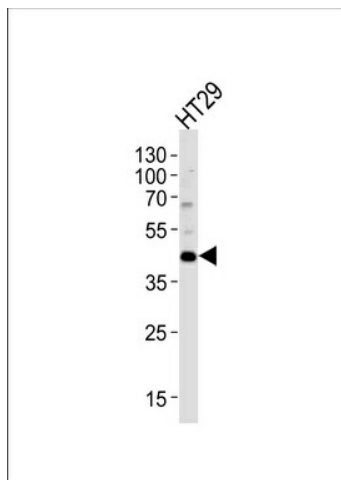
Product data:

Product Type:	Primary Antibodies
Applications:	IF, IHC, WB
Recommended Dilution:	WB: 1:1000, IF: 1:10~50, IHC: 1:50~100
Reactivity:	Human
Host:	Rabbit
Isotype:	IgG
Clonality:	Polyclonal
Immunogen:	This KLF4 antibody is generated from rabbits immunized with a his tag recombinant protein of human KLF4.
Formulation:	Purified polyclonal antibody supplied in PBS with 0.09% (W/V) sodium azide.
Concentration:	lot specific
Purification:	This antibody is prepared by Saturated Ammonium Sulfate (SAS) precipitation followed by dialysis against PBS.
Conjugation:	Unconjugated
Storage:	Store at -20°C as received.
Stability:	Stable for 12 months from date of receipt.
Predicted Protein Size:	54671 Da
Gene Name:	Kruppel-like factor 4 (gut)
Database Link:	NP_004226 Entrez Gene 9314 Human O43474
Synonyms:	EZF; GKLF
Protein Families:	Adult stem cells, Embryonic stem cells, ES Cell Differentiation/IPS, Induced pluripotent stem cells, Transcription Factors

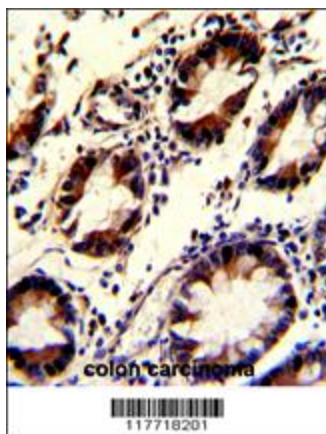


[View online »](#)

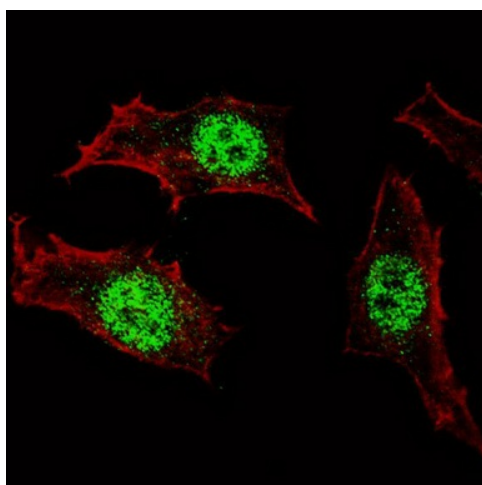
Product images:



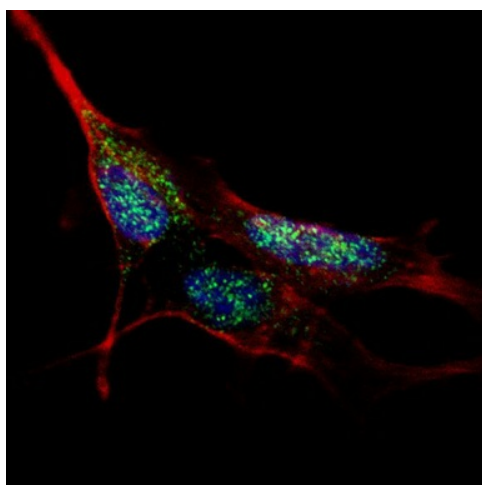
Western blot analysis of lysate from HT29 cell line, using KLF4 Antibody (Cat. #TA324724). [TA324724] was diluted at 1:1000. A goat anti-rabbit (HRP) at 1:5000 dilution was used as the secondary antibody. Lysate at 35ug.



Formalin-fixed and paraffin-embedded human colon carcinoma with KLF4 Antibody, which was peroxidase-conjugated to the secondary antibody, followed by DAB staining. This data demonstrates the use of this antibody for immunohistochemistry; clinical relevance has not been evaluated.



IF image of HeLa cells stained with [TA324724] KLF4 antibody. HeLa cells were incubated with [TA324724] KLF4 primary antibody (1:100, 2 h at RT). For secondary antibody, Alexa Fluor® 488 conjugated donkey anti-rabbit antibody (green) was used (1:1000, 1h). Cytoplasmic actin was counterstained with Alexa Fluor® 555 (red) conjugated Phalloidin. KLF4 immunoreactivity is localized specifically to the nuclei in HeLa cells.



IF image of SY5Y cells stained with [TA324724] KLF4 antibody. SY5Y cells were incubated with [TA324724] KLF4 primary antibody (1:100, 2 h at RT). For secondary antibody, Alexa Fluor® 488 conjugated donkey anti-rabbit antibody (green) was used (1:1000, 1h). Cytoplasmic actin was counterstained with Alexa Fluor® 555 (red) conjugated Phalloidin. Nuclei were counterstained with Hoechst 33342 (blue). KLF4 immunoreactivity is localized to the nuclei in SY5Y cells.