

## Product datasheet for **TA324724**

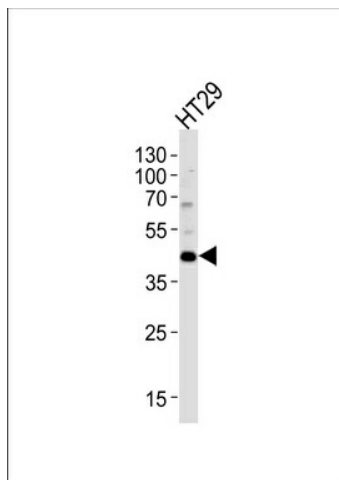
### **KLF4 Rabbit Polyclonal Antibody**

#### **Product data:**

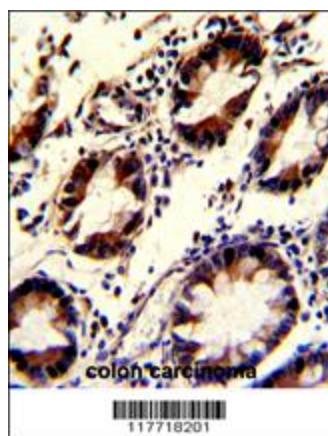
|                                |  |
|--------------------------------|--|
| <b>Product Type:</b>           | Primary Antibodies   |
| <b>Applications:</b>           | IF, IHC, WB  |
| <b>Recommended Dilution:</b>   | WB: 1:1000, IF: 1:10~50, IHC: 1:50~100   |
| <b>Reactivity:</b>             | Human  |
| <b>Host:</b>                   | Rabbit   |
| <b>Isotype:</b>                | IgG  |
| <b>Clonality:</b>              | Polyclonal   |
| <b>Immunogen:</b>              | This KLF4 antibody is generated from rabbits immunized with a his tag recombinant protein of human KLF4.                   |
| <b>Formulation:</b>            | Purified polyclonal antibody supplied in PBS with 0.09% (W/V) sodium azide.  |
| <b>Concentration:</b>          | lot specific   |
| <b>Purification:</b>           | This antibody is prepared by Saturated Ammonium Sulfate (SAS) precipitation followed by dialysis against PBS.              |
| <b>Conjugation:</b>            | Unconjugated   |
| <b>Storage:</b>                | Store at -20°C as received.  |
| <b>Stability:</b>              | Stable for 12 months from date of receipt.   |
| <b>Predicted Protein Size:</b> | 54671 Da   |
| <b>Gene Name:</b>              | Kruppel-like factor 4 (gut)  |
| <b>Database Link:</b>          | <a href="#">NP_004226</a><br><a href="#">Entrez Gene 9314 Human</a><br><a href="#">O43474</a>                              |
| <b>Synonyms:</b>               | EZF; GKLF  |
| <b>Protein Families:</b>       | Adult stem cells, Embryonic stem cells, ES Cell Differentiation/IPS, Induced pluripotent stem cells, Transcription Factors |



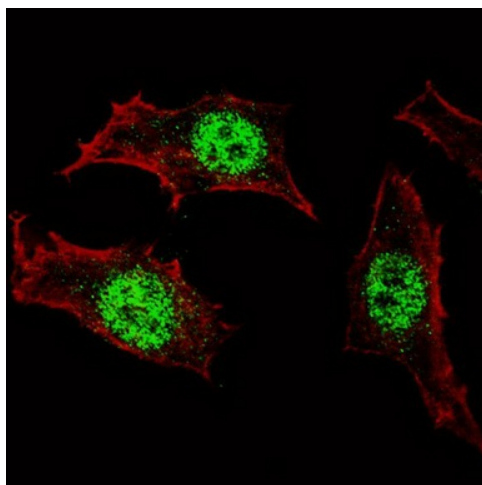
[View online »](#)

**Product images:**

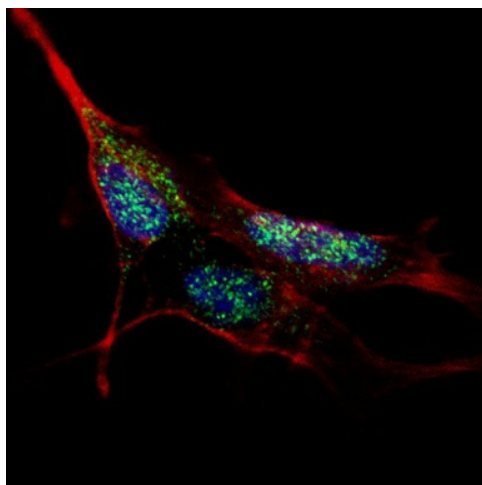
Western blot analysis of lysate from HT29 cell line, using KLF4 Antibody (Cat. #TA324724). TA324724 was diluted at 1:1000. A goat anti-rabbit (HRP) at 1:5000 dilution was used as the secondary antibody. Lysate at 35ug.



Formalin-fixed and paraffin-embedded human colon carcinoma with KLF4 Antibody, which was peroxidase-conjugated to the secondary antibody, followed by DAB staining. This data demonstrates the use of this antibody for immunohistochemistry; clinical relevance has not been evaluated.



IF image of HeLa cells stained with TA324724 KLF4 antibody. HeLa cells were incubated with TA324724 KLF4 primary antibody (1:100, 2 h at RT). For secondary antibody, Alexa Fluor® 488 conjugated donkey anti-rabbit antibody (green) was used (1:1000, 1h). Cytoplasmic actin was counterstained with Alexa Fluor® 555 (red) conjugated Phalloidin. KLF4 immunoreactivity is localized specifically to the nuclei in HeLa cells.



IF image of SY5Y cells stained with TA324724 KLF4 antibody. SY5Y cells were incubated with TA324724 KLF4 primary antibody (1:100, 2 h at RT). For secondary antibody, Alexa Fluor® 488 conjugated donkey anti-rabbit antibody (green) was used (1:1000, 1h). Cytoplasmic actin was counterstained with Alexa Fluor® 555 (red) conjugated Phalloidin. Nuclei were counterstained with Hoechst 33342 (blue). KLF4 immunoreactivity is localized to the nuclei in SY5Y cells.