

Product datasheet for **TA324723S**

KLF4 Rabbit Polyclonal Antibody

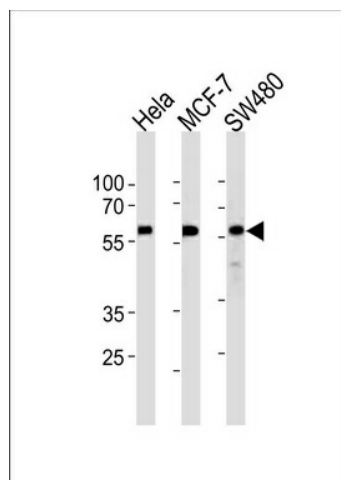
Product data:

Product Type:	Primary Antibodies
Applications:	WB
Recommended Dilution:	WB: 1:1000
Reactivity:	Human
Host:	Rabbit
Isotype:	IgG
Clonality:	Polyclonal
Immunogen:	This KLF4 antibody is generated from rabbits immunized with a KLH conjugated synthetic peptide between 20-53 amino acids from the N-terminal region of human KLF4.
Formulation:	Purified polyclonal antibody supplied in PBS with 0.09% (W/V) sodium azide.
Concentration:	lot specific
Purification:	This antibody is prepared by Saturated Ammonium Sulfate (SAS) precipitation followed by dialysis against PBS.
Conjugation:	Unconjugated
Storage:	Store at -20°C as received.
Stability:	Stable for 12 months from date of receipt.
Predicted Protein Size:	54671 Da
Gene Name:	Kruppel-like factor 4 (gut)
Database Link:	NP_004226 Entrez Gene 9314 Human O43474
Synonyms:	EZF; GKLF
Protein Families:	Adult stem cells, Embryonic stem cells, ES Cell Differentiation/IPS, Induced pluripotent stem cells, Transcription Factors



[View online »](#)

Product images:



KLF4 Antibody (N-term) (Cat. #[TA324723])
western blot analysis in HeLa, MCF-7, SW480 cell
line lysates (35ug/lane). This demonstrates the
KLF4 antibody detected the KLF4 protein (arrow).