

## Product datasheet for **TA324722**

### **KLF4 Rabbit Polyclonal Antibody**

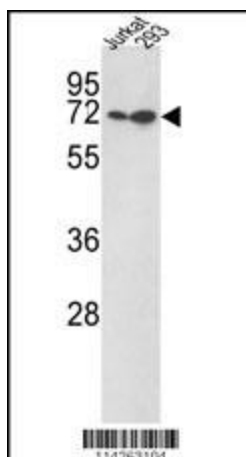
#### **Product data:**

<b>Product Type:</b>	Primary Antibodies
<b>Applications:</b>	IF, IHC, WB
<b>Recommended Dilution:</b>	WB: 1:1000, IF: 1:10~50, IHC: 1:10~50
<b>Reactivity:</b>	Human, Mouse
<b>Host:</b>	Rabbit
<b>Isotype:</b>	IgG
<b>Clonality:</b>	Polyclonal
<b>Immunogen:</b>	This KLF4 antibody is generated from rabbits immunized with a KLH conjugated synthetic peptide between 69-101 amino acids from the N-terminal region of human KLF4.
<b>Formulation:</b>	Purified polyclonal antibody supplied in PBS with 0.09% (W/V) sodium azide.
<b>Concentration:</b>	lot specific
<b>Purification:</b>	This antibody is prepared by Saturated Ammonium Sulfate (SAS) precipitation followed by dialysis against PBS.
<b>Conjugation:</b>	Unconjugated
<b>Storage:</b>	Store at -20°C as received.
<b>Stability:</b>	Stable for 12 months from date of receipt.
<b>Predicted Protein Size:</b>	54671 Da
<b>Gene Name:</b>	Kruppel-like factor 4 (gut)
<b>Database Link:</b>	<a href="#">NP_004226</a> <a href="#">Entrez Gene 16600 Mouse</a> <a href="#">Entrez Gene 9314 Human</a> <a href="#">O43474</a>
<b>Synonyms:</b>	EZF; GKLF
<b>Protein Families:</b>	Adult stem cells, Embryonic stem cells, ES Cell Differentiation/IPS, Induced pluripotent stem cells, Transcription Factors

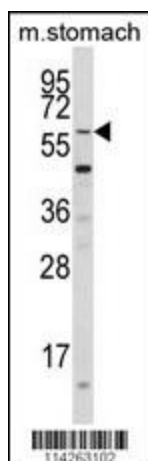


[View online »](#)

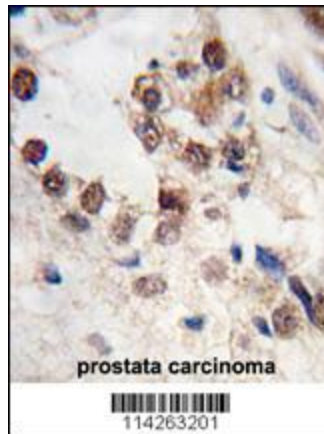
## Product images:



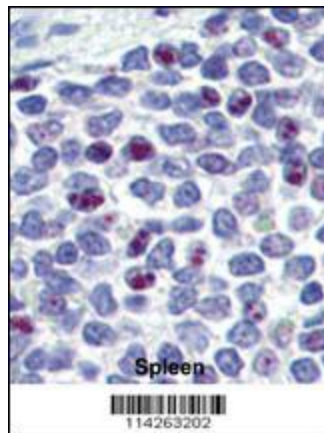
Western blot analysis of KLF4 Antibody (N-term C74) (Cat. #TA324722) in Jurkat, 293 cell line lysates (35ug/lane).KLF4 (arrow) was detected using the purified Pab.



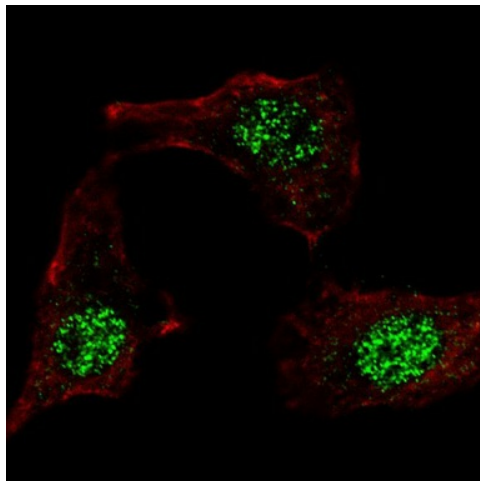
Western blot analysis of KLF4 Antibody (N-term C74) (Cat. #TA324722) in mouse stomach tissue lysates (35ug/lane). KLF4 (arrow) was detected using the purified Pab.



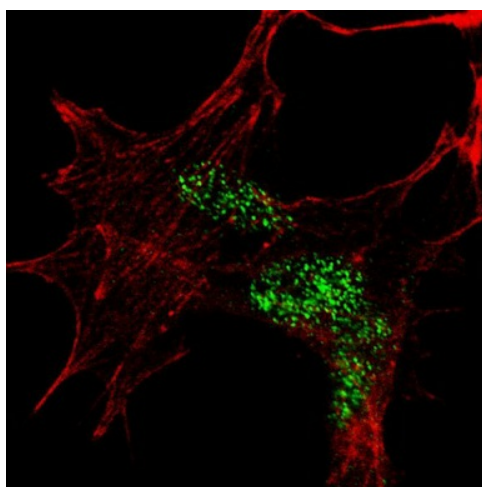
Formalin-fixed and paraffin-embedded human prostata carcinoma tissue reacted with KLF4 antibody (N-term C74) (Cat.#TA324722), which was peroxidase-conjugated to the secondary antibody, followed by DAB staining. This data demonstrates the use of this antibody for immunohistochemistry; clinical relevance has not been evaluated.



Formalin-fixed and paraffin-embedded human Spleen tissue reacted with KLF4 antibody (N-term C74) (Cat.#TA324722), which was peroxidase-conjugated to the secondary antibody, followed by AEC staining. This data demonstrates the use of this antibody for immunohistochemistry; clinical relevance has not been evaluated.



IF image of HeLa cells stained with TA324722 KLF4 (N-term C74) antibody. HeLa cells were incubated with TA324722 KLF4 (N-term C74) primary antibody (1:100, 2 h at RT). For secondary antibody, Alexa Fluor® 488 conjugated donkey anti-rabbit antibody (green) was used (1:1000, 1h). Cytoplasmic actin was counterstained with Alexa Fluor® 555 (red) conjugated Phalloidin. KLF4 immunoreactivity is localized to the nuclei in HeLa cells.



IF image of SY5Y cells stained with TA324722 KLF4 (N-term C74) antibody. SY5Y cells were incubated with TA324722 KLF4 (N-term C74) primary antibody (1:100, 2 h at RT). For secondary antibody, Alexa Fluor® 488 conjugated donkey anti-rabbit antibody (green) was used (1:1000, 1h). Cytoplasmic actin was counterstained with Alexa Fluor® 555 (red) conjugated Phalloidin. KLF4 immunoreactivity is localized to the nuclei in SY5Y cells.