

Product datasheet for **TA324720S**

FACL4 (ACSL4) Rabbit Polyclonal Antibody

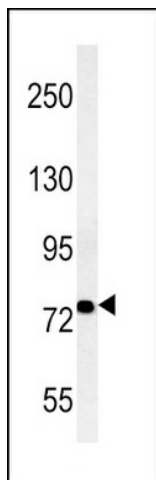
Product data:

Product Type:	Primary Antibodies
Applications:	IF, IHC, WB
Recommended Dilution:	WB: 1:1000, IF: 1:10~50, IHC: 1:50~100
Reactivity:	Human
Host:	Rabbit
Isotype:	IgG
Clonality:	Polyclonal
Immunogen:	This ACSL4 (FACL4) antibody is generated from rabbits immunized with a KLH conjugated synthetic peptide between 236-267 amino acids from the Central region of human ACSL4 (FACL4).
Formulation:	Purified polyclonal antibody supplied in PBS with 0.09% (W/V) sodium azide.
Concentration:	lot specific
Purification:	This antibody is prepared by Saturated Ammonium Sulfate (SAS) precipitation followed by dialysis against PBS.
Conjugation:	Unconjugated
Storage:	Store at -20°C as received.
Stability:	Stable for 12 months from date of receipt.
Predicted Protein Size:	79188 Da
Gene Name:	acyl-CoA synthetase long-chain family member 4
Database Link:	NP_004449 Entrez Gene 2182 Human O60488
Synonyms:	ACS4; FACL4; LACS4; MRX63; MRX68
Protein Families:	Druggable Genome, Transmembrane
Protein Pathways:	Adipocytokine signaling pathway, Fatty acid metabolism, Metabolic pathways, PPAR signaling pathway

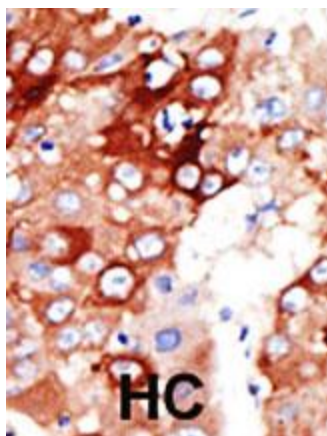


[View online »](#)

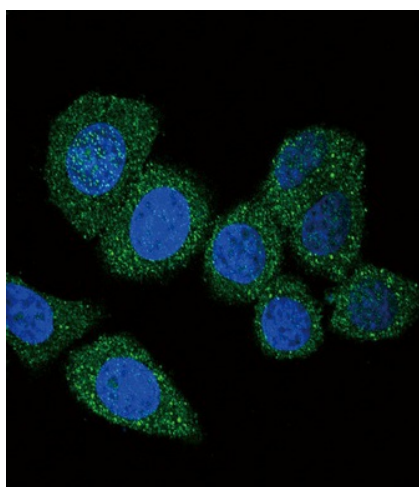
Product images:



FACL4-E251 (Cat. #[TA324720]) western blot analysis in HepG2 cell line lysates (35ug/lane). This demonstrates the FACL4 antibody detected the FACL4 protein (arrow).



Formalin-fixed and paraffin-embedded human cancer tissue reacted with the primary antibody, which was peroxidase-conjugated to the secondary antibody, followed by DAB staining. This data demonstrates the use of this antibody for immunohistochemistry; clinical relevance has not been evaluated. BC = breast carcinoma; HC = hepatocarcinoma.



Confocal immunofluorescent analysis of ACSL4 (FACL4) Antibody (Center) (Cat#[TA324720]) with HeLa cell followed by Alexa Fluor 488-conjugated goat anti-rabbit IgG (green). DAPI was used to stain the cell nuclear (blue).