

Product datasheet for **TA324719S**

YY1 Rabbit Polyclonal Antibody

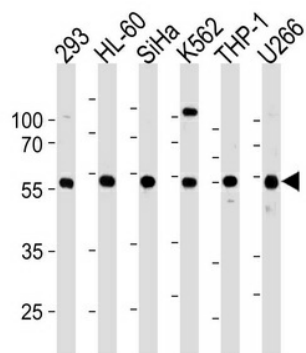
Product data:

Product Type:	Primary Antibodies
Applications:	WB
Recommended Dilution:	WB 1:1000
Reactivity:	Human (Predicted: Mouse)
Host:	Rabbit
Isotype:	IgG
Clonality:	Polyclonal
Immunogen:	This YY1 antibody is generated from rabbits immunized with a KLH conjugated synthetic peptide between 74-104 amino acids from the N-terminal region of human YY1.
Formulation:	Purified polyclonal antibody supplied in PBS with 0.09% (W/V) sodium azide.
Concentration:	lot specific
Purification:	This antibody is purified through a protein A column, followed by peptide affinity purification.
Conjugation:	Unconjugated
Storage:	Store at -20°C as received.
Stability:	Stable for 12 months from date of receipt.
Predicted Protein Size:	44713 Da
Gene Name:	YY1 transcription factor
Database Link:	NP_003394 Entrez Gene 22632 Mouse Entrez Gene 7528 Human P25490
Synonyms:	DELTA; INO80S; NF-E1; UCRBP; YIN-YANG-1
Protein Families:	Druggable Genome, Transcription Factors



[View online »](#)

Product images:



YY1 Antibody (L89) (Cat. #[TA324719]) western blot analysis in 293, HL-60, SiHa, K562, THP-1, U266 cell line lysates (35ug/lane). This demonstrates the YY1 antibody detected the YY1 protein (arrow).