

## Product datasheet for **TA324719**

### YY1 Rabbit Polyclonal Antibody

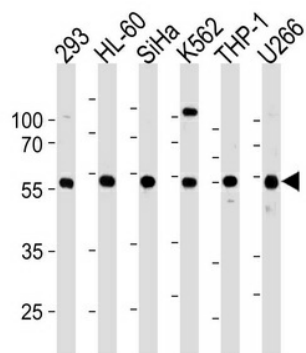
#### Product data:

Product Type:	Primary Antibodies
Applications:	WB
Recommended Dilution:	WB 1:1000
Reactivity:	Human (Predicted: Mouse)
Host:	Rabbit
Isotype:	IgG
Clonality:	Polyclonal
Immunogen:	This YY1 antibody is generated from rabbits immunized with a KLH conjugated synthetic peptide between 74-104 amino acids from the N-terminal region of human YY1.
Formulation:	Purified polyclonal antibody supplied in PBS with 0.09% (W/V) sodium azide.
Concentration:	lot specific
Purification:	This antibody is purified through a protein A column, followed by peptide affinity purification.
Conjugation:	Unconjugated
Storage:	Store at -20°C as received.
Stability:	Stable for 12 months from date of receipt.
Predicted Protein Size:	44713 Da
Gene Name:	YY1 transcription factor
Database Link:	<a href="#">NP_003394</a> <a href="#">Entrez Gene 22632 Mouse</a> <a href="#">Entrez Gene 7528 Human</a> <a href="#">P25490</a>
Synonyms:	DELTA; INO80S; NF-E1; UCRBP; YIN-YANG-1
Protein Families:	Druggable Genome, Transcription Factors



[View online »](#)

## Product images:



YY1 Antibody (L89) (Cat. #TA324719) western blot analysis in 293, HL-60, SiHa, K562, THP-1, U266 cell line lysates (35ug/lane). This demonstrates the YY1 antibody detected the YY1 protein (arrow).