

Product datasheet for **TA324718S**

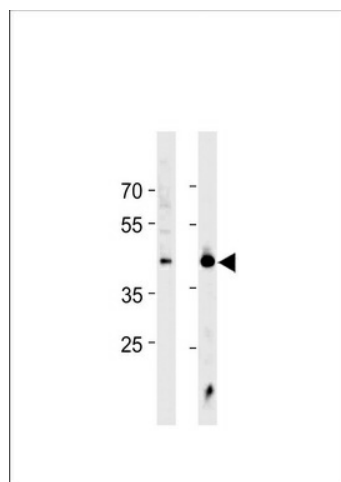
HSF1 Rabbit Polyclonal Antibody

Product data:

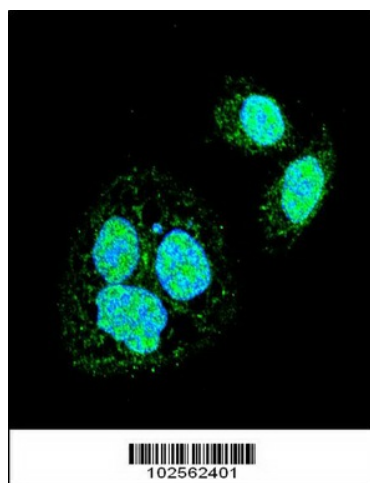
Product Type:	Primary Antibodies
Applications:	IF, WB
Recommended Dilution:	WB: 1:1000, IF: 1:10~50
Reactivity:	Human, Mouse (Predicted: Bovine)
Host:	Rabbit
Isotype:	IgG
Clonality:	Polyclonal
Immunogen:	This HSF1 Sumoylation Site antibody is generated from rabbits immunized with a KLH conjugated synthetic peptide between 278-309 amino acids from human HSF1 Sumoylation Site.
Formulation:	Purified polyclonal antibody supplied in PBS with 0.09% (W/V) sodium azide.
Concentration:	lot specific
Purification:	This antibody is prepared by Saturated Ammonium Sulfate (SAS) precipitation followed by dialysis against PBS.
Conjugation:	Unconjugated
Storage:	Store at -20°C as received.
Stability:	Stable for 12 months from date of receipt.
Predicted Protein Size:	57260 Da
Gene Name:	heat shock transcription factor 1
Database Link:	NP_005517 Entrez Gene 15499 Mouse Entrez Gene 3297 Human Q00613
Synonyms:	HSTF1
Protein Families:	Transcription Factors



[View online »](#)

Product images:

HSF1 Antibody (Cat. #[TA324718]) western blot analysis in Jurkat cell line and mouse heart tissue lysates (35ug/lane). This demonstrates the HSF1 antibody detected the HSF1 protein (arrow).



Confocal immunofluorescent analysis of HSF1 Sumoylation Site Antibody (Cat#[TA324718]) with HeLa cell followed by Alexa Fluor 488-conjugated goat anti-rabbit IgG (green). DAPI was used to stain the cell nuclear (blue).