

## Product datasheet for **TA324716S**

### **RAGE (AGER) Rabbit Polyclonal Antibody**

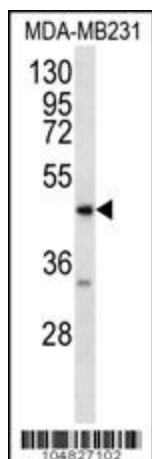
#### **Product data:**

Product Type:	Primary Antibodies
Applications:	IHC, WB
Recommended Dilution:	WB: 1:1000, IHC: 1:10~50
Reactivity:	Human
Host:	Rabbit
Isotype:	IgG
Clonality:	Polyclonal
Immunogen:	This RAGE (AGER) antibody is generated from rabbits immunized with a KLH conjugated synthetic peptide between 348-378 amino acids from the C-terminal region of human RAGE (AGER).
Formulation:	Purified polyclonal antibody supplied in PBS with 0.09% (W/V) sodium azide.
Concentration:	lot specific
Purification:	This antibody is purified through a protein A column, followed by peptide affinity purification.
Conjugation:	Unconjugated
Storage:	Store at -20°C as received.
Stability:	Stable for 12 months from date of receipt.
Predicted Protein Size:	42803 Da
Gene Name:	advanced glycosylation end product-specific receptor
Database Link:	<a href="#">NP_001127</a> <a href="#">Entrez Gene 177 Human</a> <a href="#">Q15109</a>
Synonyms:	RAGE
Protein Families:	Druggable Genome, Secreted Protein, Transmembrane

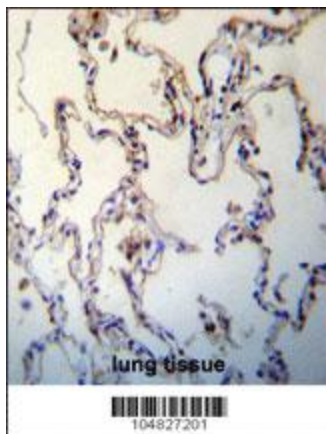


[View online »](#)

## Product images:



AGER Antibody (W363) (Cat. # [TA324716]) western blot analysis in MDA-MB231 cell line lysates (35ug/lane). This demonstrates the AGER antibody detected the AGER protein (arrow).



RAGE (AGER) Antibody (C-term) (Cat. # [TA324716]) immunohistochemistry analysis in formalin fixed and paraffin embedded human lung tissue followed by peroxidase conjugation of the secondary antibody and DAB staining. This data demonstrates the use of RAGE (AGER) Antibody (C-term) for immunohistochemistry. Clinical relevance has not been evaluated.