

Product datasheet for **TA324714S**

Ubiquilin (UBQLN1) Rabbit Polyclonal Antibody

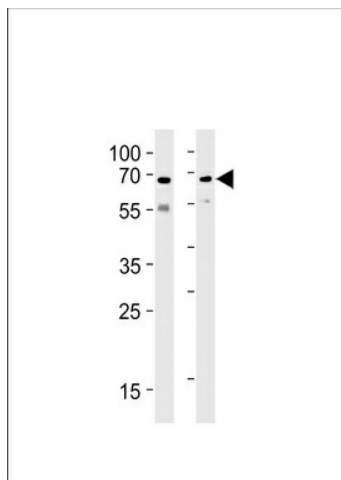
Product data:

Product Type:	Primary Antibodies
Applications:	IHC, WB
Recommended Dilution:	WB: 1:1000, IHC: 1:50~100
Reactivity:	Human, Mouse (Predicted: Rat)
Host:	Rabbit
Isotype:	IgG
Clonality:	Polyclonal
Immunogen:	This Ubiquilin1 (PLIC1) antibody is generated from rabbits immunized with a KLH conjugated synthetic peptide between 19-49 amino acids from the N-terminal region of human Ubiquilin1 (PLIC1).
Formulation:	Purified polyclonal antibody supplied in PBS with 0.09% (W/V) sodium azide.
Concentration:	lot specific
Purification:	This antibody is prepared by Saturated Ammonium Sulfate (SAS) precipitation followed by dialysis against PBS.
Conjugation:	Unconjugated
Storage:	Store at -20°C as received.
Stability:	Stable for 12 months from date of receipt.
Predicted Protein Size:	62519 Da
Gene Name:	ubiquilin 1
Database Link:	NP_038466 Entrez Gene 56085 Mouse Entrez Gene 114590 Rat Entrez Gene 29979 Human Q9UMX0
Synonyms:	DA41; DSK2; PLIC-1; UBQN; XDRP1
Protein Families:	Druggable Genome

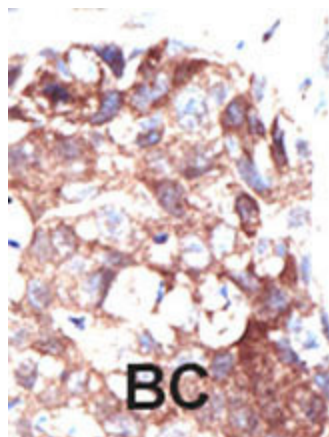


[View online »](#)

Product images:



PLIC1 Antibody (P34) (Cat.# [TA324714]) western blot analysis in SH-SY5Y, U87-MG cell line lysates (35ug/lane). This demonstrates the PLIC1 antibody detected the PLIC1 protein (arrow).



Formalin-fixed and paraffin-embedded human cancer tissue reacted with the primary antibody, which was peroxidase-conjugated to the secondary antibody, followed by DAB staining. This data demonstrates the use of this antibody for immunohistochemistry; clinical relevance has not been evaluated. BC = breast carcinoma; HC = hepatocarcinoma.