

Product datasheet for **TA324713S**

MIB1 Rabbit Polyclonal Antibody

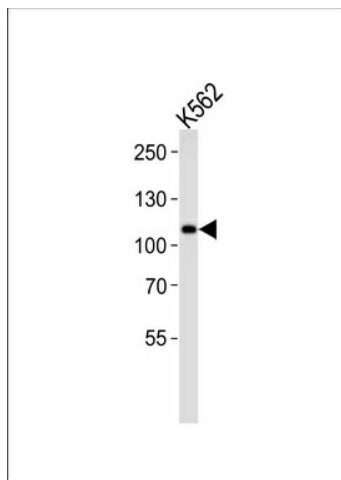
Product data:

Product Type:	Primary Antibodies
Applications:	IF, IHC, WB
Recommended Dilution:	WB: 1:1000, IF: 1:20~100, IHC: 1:50~100
Reactivity:	Human (Predicted: Mouse, Zebrafish, Xenopus)
Host:	Rabbit
Isotype:	IgG
Clonality:	Polyclonal
Immunogen:	This Mib1/Mindbomb antibody is generated from rabbits immunized with a KLH conjugated synthetic peptide between 13-42 amino acids from the N-terminal region of human Mib1/Mindbomb.
Formulation:	Purified polyclonal antibody supplied in PBS with 0.09% (W/V) sodium azide.
Concentration:	lot specific
Purification:	This antibody is prepared by Saturated Ammonium Sulfate (SAS) precipitation followed by dialysis against PBS.
Conjugation:	Unconjugated
Storage:	Store at -20°C as received.
Stability:	Stable for 12 months from date of receipt.
Predicted Protein Size:	110136 Da
Gene Name:	mindbomb E3 ubiquitin protein ligase 1
Database Link:	NP_065825 Entrez Gene 225164 Mouse Entrez Gene 57534 Human Q86YT6
Synonyms:	DIP-1; DIP1; LVNC7; MIB; ZZANK2; ZZZ6
Protein Families:	Druggable Genome

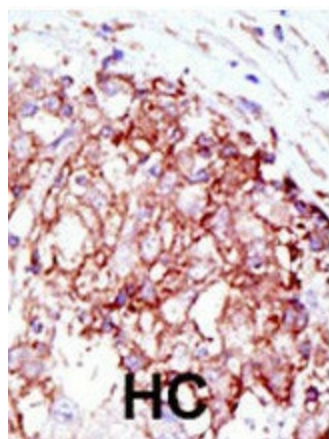


[View online »](#)

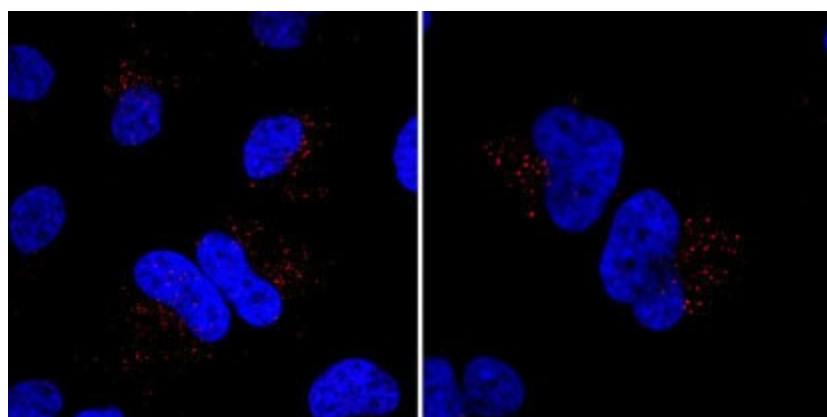
Product images:



MIB Antibody (K28) (Cat. #[TA324713]) western blot analysis in K562 cell line lysates (35ug/lane). This demonstrates the MIB antibody detected the MIB protein (arrow).



Formalin-fixed and paraffin-embedded human cancer tissue reacted with the primary antibody,



Immunofluorescent staining of HeLa cells incubated with MIB Antibody