

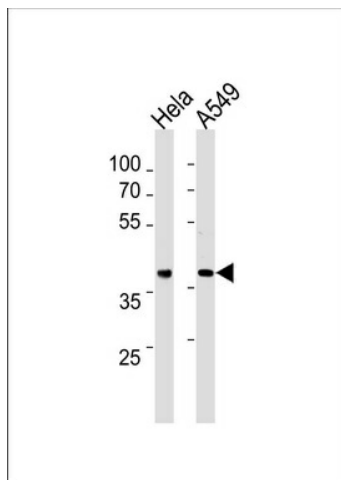
Product datasheet for **TA324711S**

ERCC1 Mouse Monoclonal Antibody [Clone ID: 752CT13.2.5]

Product data:

Product Type:	Primary Antibodies
Clone Name:	752CT13.2.5
Applications:	WB
Recommended Dilution:	WB: 1:1000
Reactivity:	Human
Host:	Mouse
Isotype:	IgM, kappa
Clonality:	Monoclonal
Immunogen:	This ERCC1 antibody is generated from mice immunized with a KLH conjugated synthetic peptide between 268-297 amino acids from the C-terminal region of human ERCC1.
Formulation:	Purified monoclonal antibody supplied in PBS with 0.09% (W/V) sodium azide.
Concentration:	lot specific
Purification:	This antibody is prepared by Euglobin precipitation followed by dialysis against PBS.
Conjugation:	Unconjugated
Storage:	Store at -20°C as received.
Stability:	Stable for 12 months from date of receipt.
Predicted Protein Size:	32562 Da
Gene Name:	ERCC excision repair 1, endonuclease non-catalytic subunit
Database Link:	NP_973730 Entrez Gene 2067 Human P07992
Synonyms:	COFS4; RAD10; UV20
Protein Families:	Druggable Genome
Protein Pathways:	Nucleotide excision repair


[View online »](#)

Product images:


ERCC1 Antibody (C-term) (Cat. #[TA324711])
western blot analysis in HeLa, A549 cell line
lysates (35ug/lane). This demonstrates the ERCC1
antibody detected the ERCC1 protein (arrow).