

## Product datasheet for **TA324710S**

### PGP9.5 (UCHL1) Rabbit Polyclonal Antibody

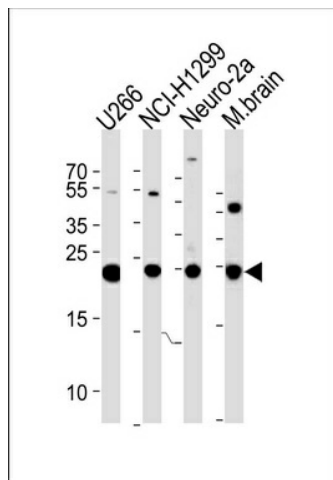
#### Product data:

Product Type:	Primary Antibodies
Applications:	IF, IHC, WB
Recommended Dilution:	WB: 1:1000, IF: 1:10~50, IHC: 1:10~50
Reactivity:	Human, Rat (Predicted: Mouse, Bovine, Pig, Monkey)
Host:	Rabbit
Isotype:	IgG
Clonality:	Polyclonal
Immunogen:	This UCHL1 antibody is generated from rabbits immunized with a KLH conjugated synthetic peptide between 187-214 amino acids from the C-terminal region of human UCHL1.
Formulation:	Purified polyclonal antibody supplied in PBS with 0.09% (W/V) sodium azide.
Concentration:	lot specific
Purification:	This antibody is purified through a protein A column, followed by peptide affinity purification.
Conjugation:	Unconjugated
Storage:	Store at -20°C as received.
Stability:	Stable for 12 months from date of receipt.
Predicted Protein Size:	24824 Da
Gene Name:	ubiquitin C-terminal hydrolase L1
Database Link:	<a href="#">NP_004172</a> <a href="#">Entrez Gene 22223 Mouse</a> <a href="#">Entrez Gene 29545 Rat</a> <a href="#">Entrez Gene 701579 Monkey</a> <a href="#">Entrez Gene 7345 Human</a> <a href="#">P09936</a>
Synonyms:	HEL-117; NDGOA; PARK5; PGP 9.5; PGP9.5; PGP95; Uch-L1
Protein Families:	Druggable Genome, Protease
Protein Pathways:	Parkinson's disease

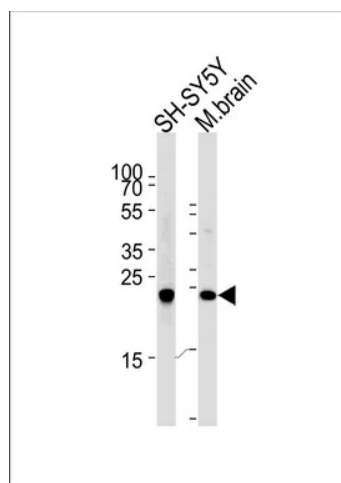


[View online »](#)

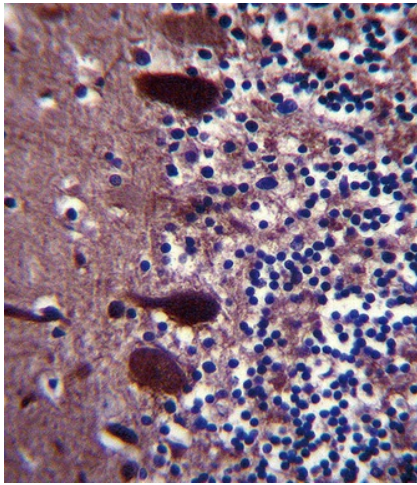
Product images:



UCHL1 Antibody (C-term) (Cat.# [TA324710]) western blot analysis in U266, NCI-H1299, mouse Neuro-2a cell line and mouse brain tissue lysates (35ug/lane). This demonstrates the UCHL1 antibody detected the UCHL1 protein (arrow).



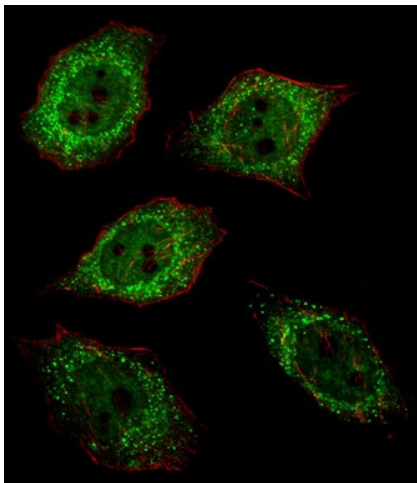
Western blot analysis of lysates from SH-SY5Y cell line and mouse brain tissue (from left to right), using UCHL1 Antibody (C-term) (Cat. # [TA324710]). [TA324710] was diluted at 1:1000 at each lane. A goat anti-rabbit IgG H&L (HRP) at 1:5000 dilution was used as the secondary antibody. Lysates at 35ug per lane.



UCHL1 Antibody (C-term) (Cat. # [TA324710]) immunohistochemistry analysis in formalin fixed and paraffin embedded human pancreas tissue followed by peroxidase conjugation of the secondary antibody and DAB staining. This data demonstrates the use of UCHL1 Antibody (C-term) for immunohistochemistry. Clinical relevance has not been evaluated.



UCHL1 Antibody (C-term) (Cat. # [TA324710]) immunohistochemistry analysis in formalin fixed and paraffin embedded human cerebellum tissue followed by peroxidase conjugation of the secondary antibody and DAB staining. This data demonstrates the use of UCHL1 Antibody (C-term) for immunohistochemistry. Clinical relevance has not been evaluated.



IF image of U251 cell stained with UCHL1 Antibody (C-term) (Cat# [TA324710]/SA120806AG). U251 cells were incubated with UCHL1 primary antibody (1:25, 1 h at 37°C). For secondary antibody, Alexa Fluor® 488 conjugated donkey anti-rabbit antibody (green) was used (1:400). Cytoplasmic actin was counterstained with Alexa Fluor® 555 (red) conjugated Phalloidin (7 units/ml). UCHL1 immunoreactivity is localized to Cytoplasm and Nucleus significantly.