

## Product datasheet for **TA324709S**

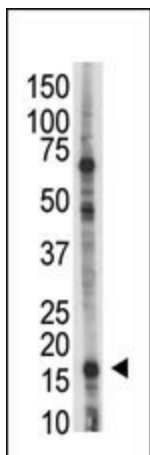
### UBE2L6 Rabbit Polyclonal Antibody

#### Product data:

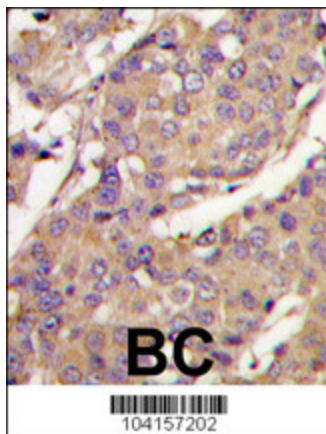
Product Type:	Primary Antibodies
Applications:	IHC, WB
Recommended Dilution:	WB: 1:1000, IHC: 1:10~50
Reactivity:	Human
Host:	Rabbit
Isotype:	IgG
Clonality:	Polyclonal
Immunogen:	This UBE2L6 antibody is generated from rabbits immunized with a KLH conjugated synthetic peptide between 123-153 amino acids from the C-terminal region of human UBE2L6.
Formulation:	Purified polyclonal antibody supplied in PBS with 0.09% (W/V) sodium azide.
Concentration:	lot specific
Purification:	This antibody is prepared by Saturated Ammonium Sulfate (SAS) precipitation followed by dialysis against PBS.
Conjugation:	Unconjugated
Storage:	Store at -20°C as received.
Stability:	Stable for 12 months from date of receipt.
Predicted Protein Size:	17769 Da
Gene Name:	ubiquitin conjugating enzyme E2 L6
Database Link:	<a href="#">NP_004214</a> <a href="#">Entrez Gene 9246 Human</a> <a href="#">O14933</a>
Synonyms:	RIG-B; UBCH8
Protein Pathways:	Parkinson's disease, Ubiquitin mediated proteolysis



[View online »](#)

**Product images:**

The UBE2L6 Antibody (C-term) (Cat. #[TA324709]) is used in Western blot to detect UBE2L6 in HL-60 cell lysate.



Formalin-fixed and paraffin-embedded breast carcinoma tissue reacted with UBE2L6 Antibody (C-term) (Cat.#[TA324709]), which was peroxidase-conjugated to the secondary antibody, followed by DAB staining. This data demonstrates the use of this antibody for immunohistochemistry; clinical relevance has not been evaluated.