

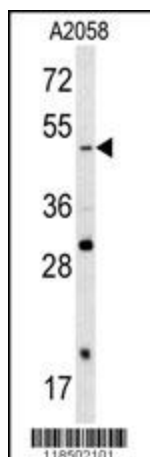
## Product datasheet for **TA324704S**

### SOX4 Rabbit Polyclonal Antibody

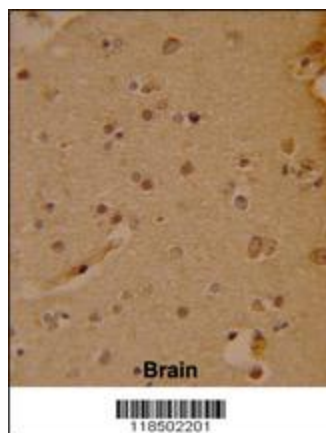
#### Product data:

Product Type:	Primary Antibodies
Applications:	FC, IF, IHC, WB
Recommended Dilution:	WB: 1:1000, IHC: 1:50~100, FC: 1:10~50, IF: 1:10~50
Reactivity:	Human
Host:	Rabbit
Isotype:	IgG
Clonality:	Polyclonal
Immunogen:	This SOX4 antibody is generated from rabbits immunized with a KLH conjugated synthetic peptide between 86-114 amino acids from the N-terminal region of human SOX4.
Formulation:	Purified polyclonal antibody supplied in PBS with 0.09% (W/V) sodium azide.
Concentration:	lot specific
Purification:	This antibody is prepared by Saturated Ammonium Sulfate (SAS) precipitation followed by dialysis against PBS.
Conjugation:	Unconjugated
Storage:	Store at -20°C as received.
Stability:	Stable for 12 months from date of receipt.
Predicted Protein Size:	47263 Da
Gene Name:	SRY-box 4
Database Link:	<a href="#">NP_003098</a> <a href="#">Entrez Gene 6659 Human</a> <a href="#">Q06945</a>
Synonyms:	EVI16
Protein Families:	Druggable Genome, ES Cell Differentiation/IPS, Induced pluripotent stem cells, Stem cell relevant signaling - TGFb/BMP signaling pathway, Transcription Factors

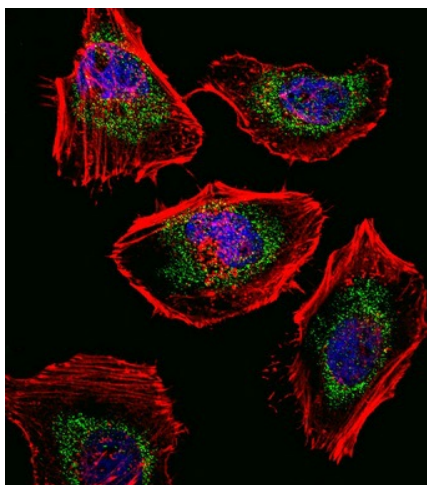
[View online »](#)

**Product images:**


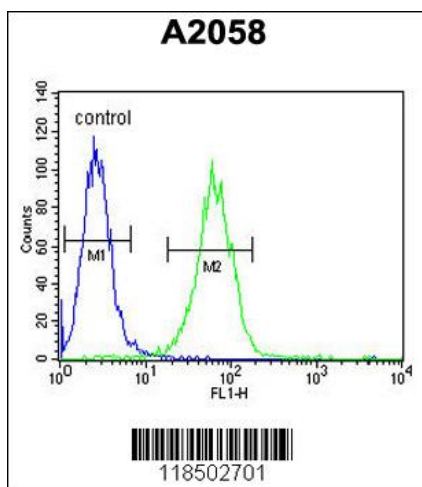
Western blot analysis of SOX4 antibody (N-term) (Cat. #[TA324704]) in A2058 cell line lysates (35ug/lane). SOX4 (arrow) was detected using the purified Pab.



Formalin-fixed and paraffin-embedded human brain reacted with SOX4 Antibody (N-term), which was peroxidase-conjugated to the secondary antibody, followed by DAB staining. This data demonstrates the use of this antibody for immunohistochemistry; clinical relevance has not been evaluated.



IF image of Hela cell stained with SOX4 Antibody (N-term) (Cat#[TA324704]). Hela cells were incubated with SOX4 primary antibody (1:25, 1 h at 37°C). For secondary antibody, Alexa Fluor® 488 conjugated donkey anti-rabbit antibody (green) was used (1:400). Cytoplasmic actin was counterstained with Alexa Fluor® 555 (red) conjugated Phalloidin (7 units/ml). Nuclei were counterstained with DAPI (blue). SOX4 immunoreactivity is localized to Mitochondria significantly and Nucleus weakly.



SOX4 Antibody (N-term) (Cat. #TA324704) flow cytometric analysis of A2058 cells (right histogram) compared to a negative control cell (left histogram). FITC-conjugated goat-anti-rabbit secondary antibodies were used for the analysis.