

## Product datasheet for **TA324703S**

### Tau (MAPT) Rabbit Polyclonal Antibody

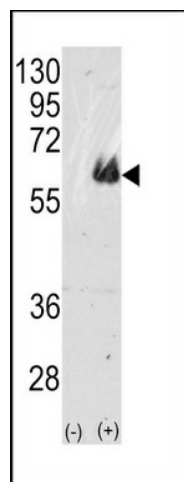
#### Product data:

Product Type:	Primary Antibodies
Applications:	IF, IHC, WB
Recommended Dilution:	WB: 1:1000, IHC: 1:50~100, IF: 1:10~50
Reactivity:	Human (Predicted: Mouse, Rat, Bovine)
Host:	Rabbit
Isotype:	IgG
Clonality:	Polyclonal
Immunogen:	This TAU antibody is generated from rabbits immunized with a KLH conjugated synthetic peptide between 677-707 amino acids from the C-terminal region of human TAU.
Formulation:	Purified polyclonal antibody supplied in PBS with 0.09% (W/V) sodium azide.
Concentration:	lot specific
Purification:	This antibody is prepared by Saturated Ammonium Sulfate (SAS) precipitation followed by dialysis against PBS.
Conjugation:	Unconjugated
Storage:	Store at -20°C as received.
Stability:	Stable for 12 months from date of receipt.
Predicted Protein Size:	78928 Da
Gene Name:	microtubule associated protein tau
Database Link:	<a href="#">NP_058525</a> <a href="#">Entrez Gene 17762 Mouse</a> <a href="#">Entrez Gene 29477 Rat</a> <a href="#">Entrez Gene 4137 Human</a> <a href="#">P10636</a>
Synonyms:	DDPAC; FTDP-17; MAPTL; MSTD; MTBT1; MTBT2; PPND; PPP1R103; TAU
Protein Families:	Druggable Genome
Protein Pathways:	Alzheimer's disease, MAPK signaling pathway

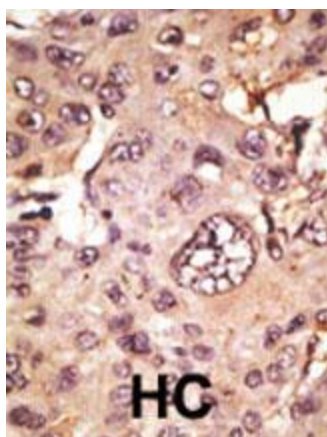


[View online »](#)

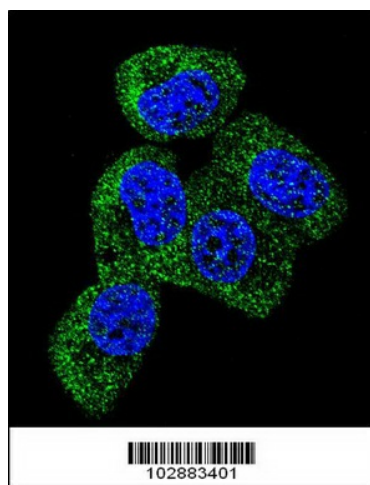
## Product images:



Western blot analysis of TAU (arrow) using rabbit polyclonal TAU Antibody



Formalin-fixed and paraffin-embedded human cancer tissue reacted with the primary antibody, which was peroxidase-conjugated to the secondary antibody, followed by AEC staining. This data demonstrates the use of this antibody for immunohistochemistry; clinical relevance has not been evaluated. BC = breast carcinoma; HC = hepatocarcinoma.



Confocal immunofluorescent analysis of TAU Antibody (C-term) (Cat#[TA324703]) with MCF-7 cell followed by Alexa Fluor 488-conjugated goat anti-rabbit IgG (green). DAPI was used to stain the cell nuclear (blue).