

Product datasheet for **TA324702S**

PROX1 Rabbit Polyclonal Antibody

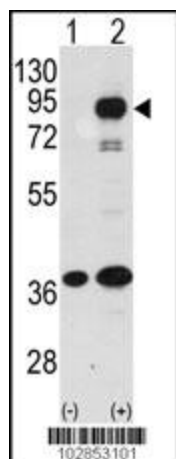
Product data:

Product Type:	Primary Antibodies
Applications:	IF, WB
Recommended Dilution:	WB: 1:1000, IF: 1:10~50
Reactivity:	Human (Predicted: Mouse)
Host:	Rabbit
Isotype:	IgG
Clonality:	Polyclonal
Immunogen:	This PROX1 antibody is generated from rabbits immunized with a KLH conjugated synthetic peptide between 492-522 amino acids from the C-terminal region of human PROX1.
Formulation:	Purified polyclonal antibody supplied in PBS with 0.09% (W/V) sodium azide.
Concentration:	lot specific
Purification:	This antibody is purified through a protein A column, followed by peptide affinity purification.
Conjugation:	Unconjugated
Storage:	Store at -20°C as received.
Stability:	Stable for 12 months from date of receipt.
Predicted Protein Size:	83203 Da
Gene Name:	prospero homeobox 1
Database Link:	NP_002754 Entrez Gene 19130 Mouse Entrez Gene 5629 Human Q92786
Synonyms:	prospero-related homeobox 1; prospero homeobox 1
Protein Families:	Embryonic stem cells, ES Cell Differentiation/IPS

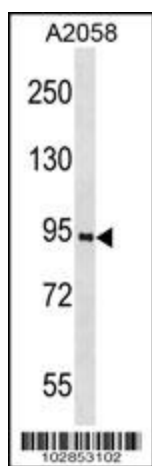


[View online »](#)

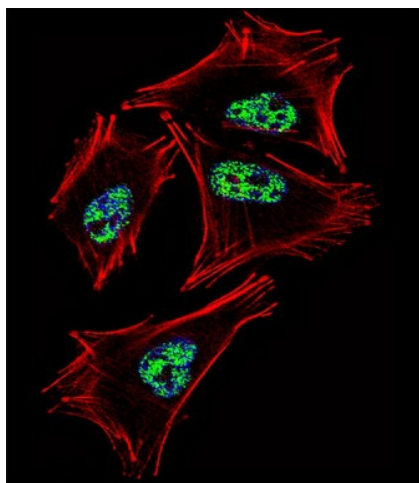
Product images:



Western blot analysis of PROX1 (arrow) using rabbit polyclonal PROX1 Antibody



PROX1 Antibody (K507) (Cat. #[TA324702]) western blot analysis in A2058 cell line lysates (35ug/lane). This demonstrates the PROX1 antibody detected the PROX1 protein (arrow).



IF image of A2058 cell stained with PROX1 Antibody (C-term) (Cat#[TA324702]). A2058 cells were incubated with PROX1 primary antibody (1:25, 1 h at 37°C). For secondary antibody, Alexa Fluor® 488 conjugated donkey anti-rabbit antibody (green) was used (1:400). Cytoplasmic actin was counterstained with Alexa Fluor® 555 (red) conjugated Phalloidin (7 units/ml). Nuclei were counterstained with DAPI (blue). PROX1 immunoreactivity is localized to Nucleus significantly.