

Product datasheet for **TA324702**

PROX1 Rabbit Polyclonal Antibody

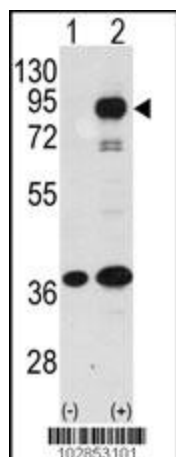
Product data:

| | |
|-------------------------|--|
| Product Type: | Primary Antibodies |
| Applications: | IF, WB |
| Recommended Dilution: | WB: 1:1000, IF: 1:10~50 |
| Reactivity: | Human (Predicted: Mouse) |
| Host: | Rabbit |
| Isotype: | IgG |
| Clonality: | Polyclonal |
| Immunogen: | This PROX1 antibody is generated from rabbits immunized with a KLH conjugated synthetic peptide between 492-522 amino acids from the C-terminal region of human PROX1. |
| Formulation: | Purified polyclonal antibody supplied in PBS with 0.09% (W/V) sodium azide. |
| Concentration: | lot specific |
| Purification: | This antibody is purified through a protein A column, followed by peptide affinity purification. |
| Conjugation: | Unconjugated |
| Storage: | Store at -20°C as received. |
| Stability: | Stable for 12 months from date of receipt. |
| Predicted Protein Size: | 83203 Da |
| Gene Name: | prospero homeobox 1 |
| Database Link: | NP_002754 Entrez Gene 19130 Mouse Entrez Gene 5629 Human Q92786 |
| Synonyms: | prospero-related homeobox 1; prospero homeobox 1 |
| Protein Families: | Embryonic stem cells, ES Cell Differentiation/IPS |

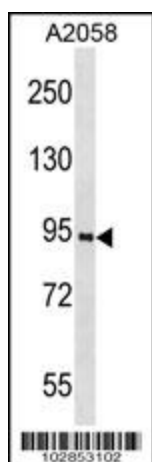


[View online »](#)

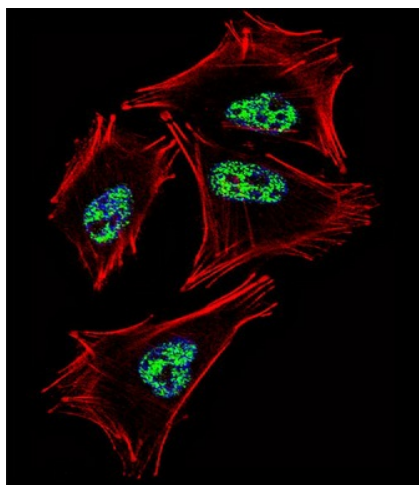
Product images:



Western blot analysis of PROX1 (arrow) using rabbit polyclonal PROX1 Antibody



PROX1 Antibody (K507) (Cat. #TA324702) western blot analysis in A2058 cell line lysates (35ug/lane). This demonstrates the PROX1 antibody detected the PROX1 protein (arrow).



IF image of A2058 cell stained with PROX1 Antibody (C-term) (Cat#TA324702). A2058 cells were incubated with PROX1 primary antibody (1:25, 1 h at 37°C). For secondary antibody, Alexa Fluor® 488 conjugated donkey anti-rabbit antibody (green) was used (1:400). Cytoplasmic actin was counterstained with Alexa Fluor® 555 (red) conjugated Phalloidin (7 units/ml). Nuclei were counterstained with DAPI (blue). PROX1 immunoreactivity is localized to Nucleus significantly.