

Product datasheet for **TA324700**

CNBP Rabbit Polyclonal Antibody

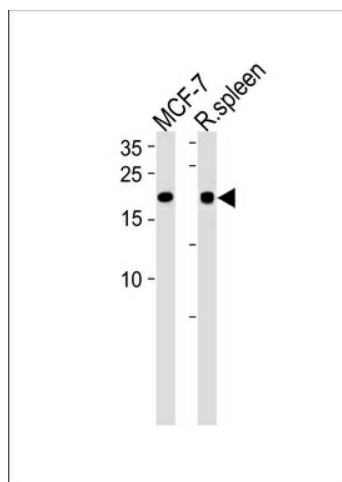
Product data:

Product Type:	Primary Antibodies
Applications:	WB
Recommended Dilution:	WB: 1:1000
Reactivity:	Human, Rat (Predicted: Mouse, Bovine, Chicken)
Host:	Rabbit
Isotype:	IgG
Clonality:	Polyclonal
Immunogen:	This CNBP antibody is generated from rabbits immunized with a KLH conjugated synthetic peptide between 91-118 amino acids from the Central region of human CNBP.
Formulation:	Purified polyclonal antibody supplied in PBS with 0.09% (W/V) sodium azide.
Concentration:	lot specific
Purification:	This antibody is purified through a protein A column, followed by peptide affinity purification.
Conjugation:	Unconjugated
Storage:	Store at -20°C as received.
Stability:	Stable for 12 months from date of receipt.
Predicted Protein Size:	19463 Da
Gene Name:	CCHC-type zinc finger nucleic acid binding protein
Database Link:	NP_001120664 Entrez Gene 12785 Mouse Entrez Gene 64530 Rat Entrez Gene 7555 Human P62633
Synonyms:	CNBP1; DM2; PROMM; RNF163; ZCCHC22; ZNF9
Protein Families:	Druggable Genome, Transcription Factors



[View online »](#)

Product images:



CNBP Antibody (Center) (Cat. #TA324700) western blot analysis in MCF-7 cell line and rat spleen tissue lysates (35ug/lane). This demonstrates the CNBP antibody detected the CNBP protein (arrow).