

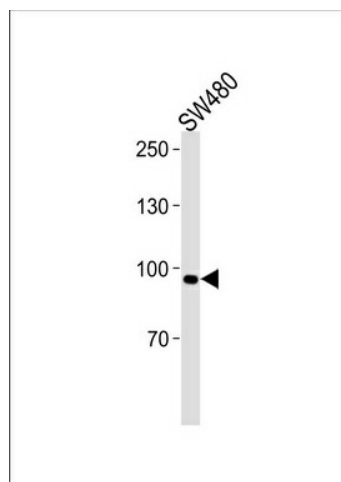
## Product datasheet for **TA324699S**

### ANO6 Rabbit Polyclonal Antibody

#### Product data:

Product Type:	Primary Antibodies
Applications:	WB
Recommended Dilution:	WB: 1:1000
Reactivity:	Human
Host:	Rabbit
Isotype:	IgG
Clonality:	Polyclonal
Immunogen:	This ANO6 antibody is generated from rabbits immunized with a KLH conjugated synthetic peptide between 68-96 amino acids from the N-terminal region of human ANO6.
Formulation:	Purified polyclonal antibody supplied in PBS with 0.09% (W/V) sodium azide.
Concentration:	lot specific
Purification:	This antibody is purified through a protein A column, followed by peptide affinity purification.
Conjugation:	Unconjugated
Storage:	Store at -20°C as received.
Stability:	Stable for 12 months from date of receipt.
Predicted Protein Size:	106165 Da
Gene Name:	anoctamin 6
Database Link:	<a href="#">NP_001020527</a> <a href="#">Entrez Gene 196527 Human</a> <a href="#">Q4KMQ2</a>
Synonyms:	BDPLT7; SCTS; TMEM16F
Protein Families:	Transmembrane

[View online »](#)

**Product images:**


ANO6 Antibody (N-term) (Cat. #[TA324699])  
western blot analysis in SW480 cell line lysates  
(35ug/lane). This demonstrates the ANO6  
antibody detected the ANO6 protein (arrow).