

## Product datasheet for **TA324699**

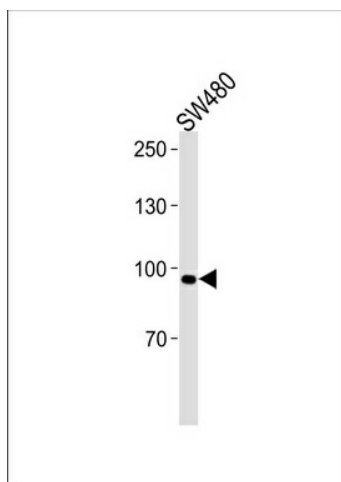
### ANO6 Rabbit Polyclonal Antibody

#### Product data:

|                         |  |
|-------------------------|--|
| Product Type:           | Primary Antibodies   |
| Applications:           | WB   |
| Recommended Dilution:   | WB: 1:1000   |
| Reactivity:             | Human  |
| Host:                   | Rabbit   |
| Isotype:                | IgG  |
| Clonality:              | Polyclonal   |
| Immunogen:              | This ANO6 antibody is generated from rabbits immunized with a KLH conjugated synthetic peptide between 68-96 amino acids from the N-terminal region of human ANO6. |
| Formulation:            | Purified polyclonal antibody supplied in PBS with 0.09% (W/V) sodium azide.  |
| Concentration:          | lot specific   |
| Purification:           | This antibody is purified through a protein A column, followed by peptide affinity purification.   |
| Conjugation:            | Unconjugated   |
| Storage:                | Store at -20°C as received.  |
| Stability:              | Stable for 12 months from date of receipt.   |
| Predicted Protein Size: | 106165 Da  |
| Gene Name:              | anoctamin 6  |
| Database Link:          | <a href="#">NP_001020527</a><br><a href="#">Entrez Gene 196527 Human</a><br><a href="#">Q4KMQ2</a>   |
| Synonyms:               | BDPLT7; SCTS; TMEM16F  |
| Protein Families:       | Transmembrane  |



[View online »](#)

**Product images:**

ANO6 Antibody (N-term) (Cat. #TA324699) western blot analysis in SW480 cell line lysates (35ug/lane). This demonstrates the ANO6 antibody detected the ANO6 protein (arrow).