

## Product datasheet for **TA324698S**

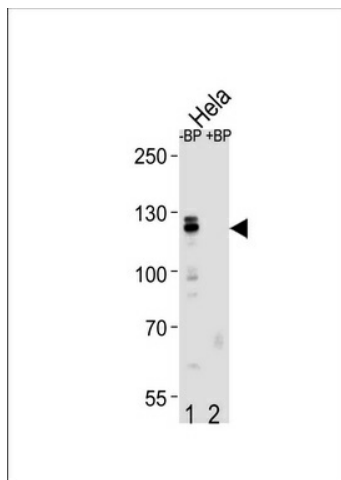
### Cullin 4B (CUL4B) Rabbit Polyclonal Antibody

#### Product data:

Product Type:	Primary Antibodies
Applications:	WB
Recommended Dilution:	WB: 1:1000
Reactivity:	Human (Predicted: Mouse)
Host:	Rabbit
Isotype:	IgG
Clonality:	Polyclonal
Immunogen:	This CUL4B antibody is generated from rabbits immunized with a KLH conjugated synthetic peptide between 250-278 amino acids from the Central region of human CUL4B.
Formulation:	Purified polyclonal antibody supplied in PBS with 0.09% (W/V) sodium azide.
Concentration:	lot specific
Purification:	This antibody is purified through a protein A column, followed by peptide affinity purification.
Conjugation:	Unconjugated
Storage:	Store at -20°C as received.
Stability:	Stable for 12 months from date of receipt.
Predicted Protein Size:	103982 Da
Gene Name:	cullin 4B
Database Link:	<a href="#">NP_003579</a> <a href="#">Entrez Gene 72584 Mouse</a> <a href="#">Entrez Gene 8450 Human</a> <a href="#">Q13620</a>
Synonyms:	CUL-4B; MRXHF2; MRXS15; MRXSC; SFM2
Protein Pathways:	Nucleotide excision repair, Ubiquitin mediated proteolysis



[View online »](#)

**Product images:**


Western blot analysis of CUL4B Antibody (Center) Pab (Cat. #TA324698) pre-incubated without (lane 1) and with (lane 2) blocking peptide in HeLa cell line lysate. CUL4B Antibody (Center) (arrow) was detected using the purified Pab.