

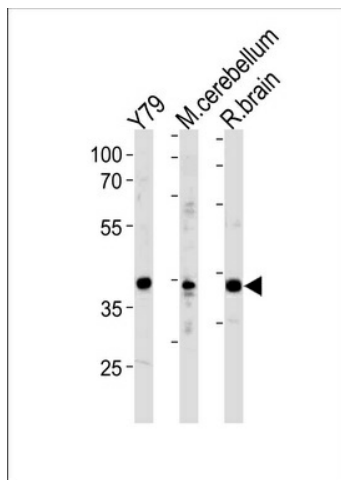
## Product datasheet for TA324697S

### NEUROD1 Rabbit Polyclonal Antibody

#### Product data:

Product Type:	Primary Antibodies
Applications:	WB
Recommended Dilution:	WB: 1:1000
Reactivity:	Human, Mouse, Rat
Host:	Rabbit
Isotype:	IgG
Clonality:	Polyclonal
Immunogen:	This NeuroD1 antibody is generated from rabbits immunized with a KLH conjugated synthetic peptide between 318-348 amino acids from the C-terminal region of human NeuroD1.
Formulation:	Purified polyclonal antibody supplied in PBS with 0.09% (W/V) sodium azide.
Concentration:	lot specific
Purification:	This antibody is prepared by Saturated Ammonium Sulfate (SAS) precipitation followed by dialysis against PBS.
Conjugation:	Unconjugated
Storage:	Store at -20°C as received.
Stability:	Stable for 12 months from date of receipt.
Predicted Protein Size:	39920 Da
Gene Name:	neuronal differentiation 1
Database Link:	<a href="#">NP_002491</a> <a href="#">Entrez Gene 18012 Mouse</a> <a href="#">Entrez Gene 29458 Rat</a> <a href="#">Entrez Gene 4760 Human</a> <a href="#">Q13562</a>
Synonyms:	BETA2; BHF-1; bHLHa3; MODY6; NEUROD
Protein Families:	Adult stem cells, Druggable Genome, Embryonic stem cells, ES Cell Differentiation/IPS, Transcription Factors
Protein Pathways:	Maturity onset diabetes of the young


[View online »](#)

**Product images:**


NeuroD1 Antibody (I333) (Cat. #TA324697])  
western blot analysis in Y79 cell line, mouse  
cerebellum and rat brain tissue lysates  
(35ug/lane). This demonstrates the NeuroD1  
antibody detected the NeuroD1 protein (arrow).